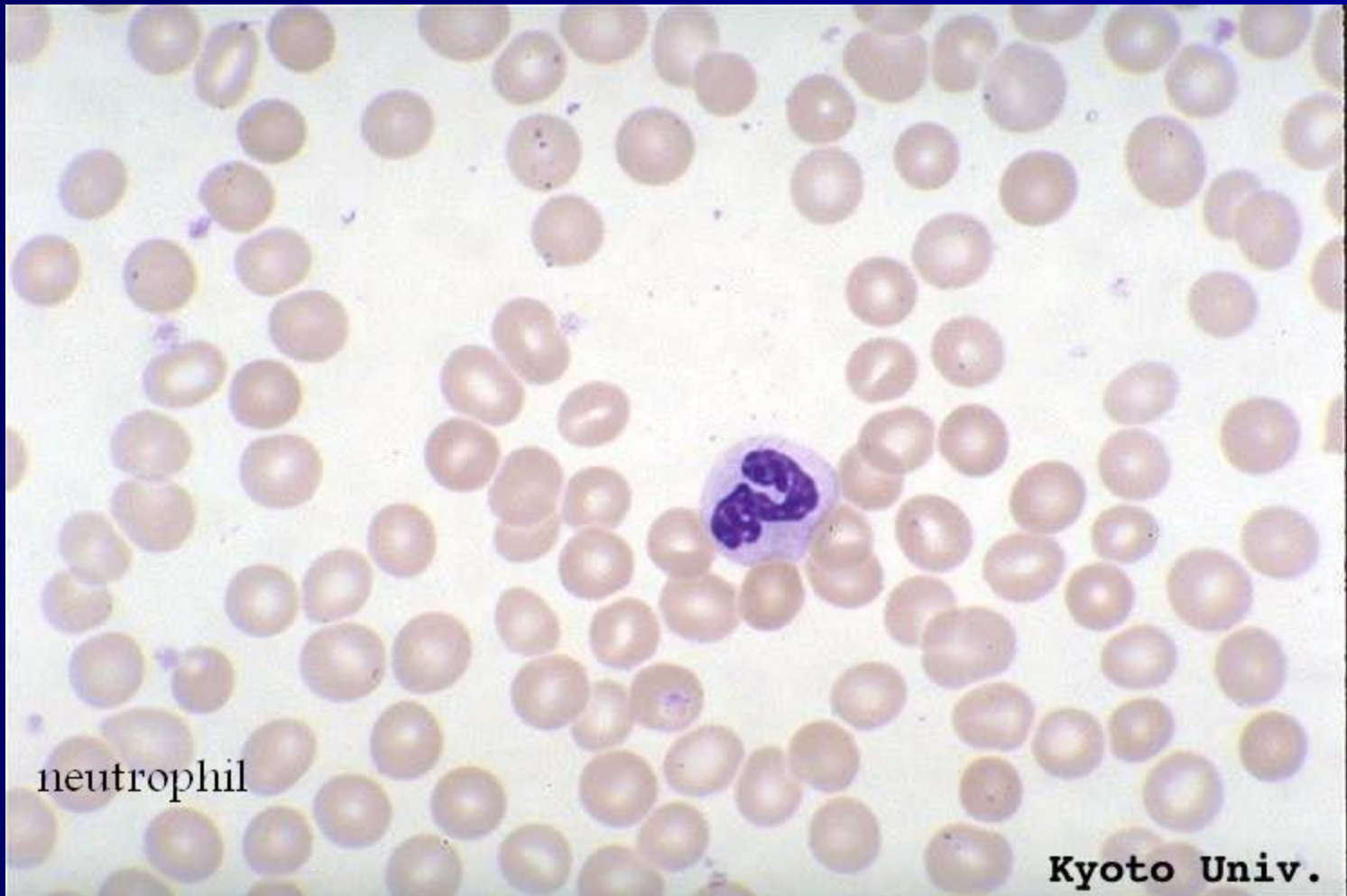


Neutrophil



# *Neutrophil*

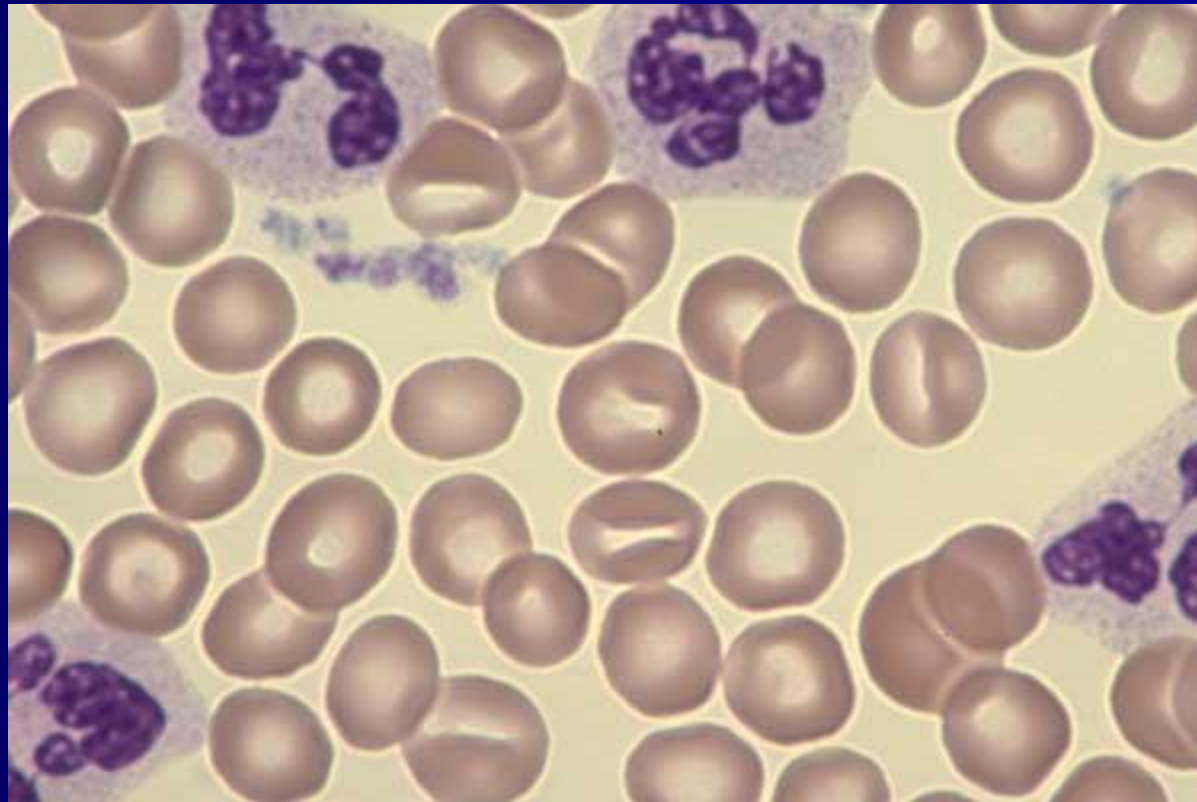


neutrophil

Kyoto Univ.

# *Segmented Neutrophils*

**Normal Blood**

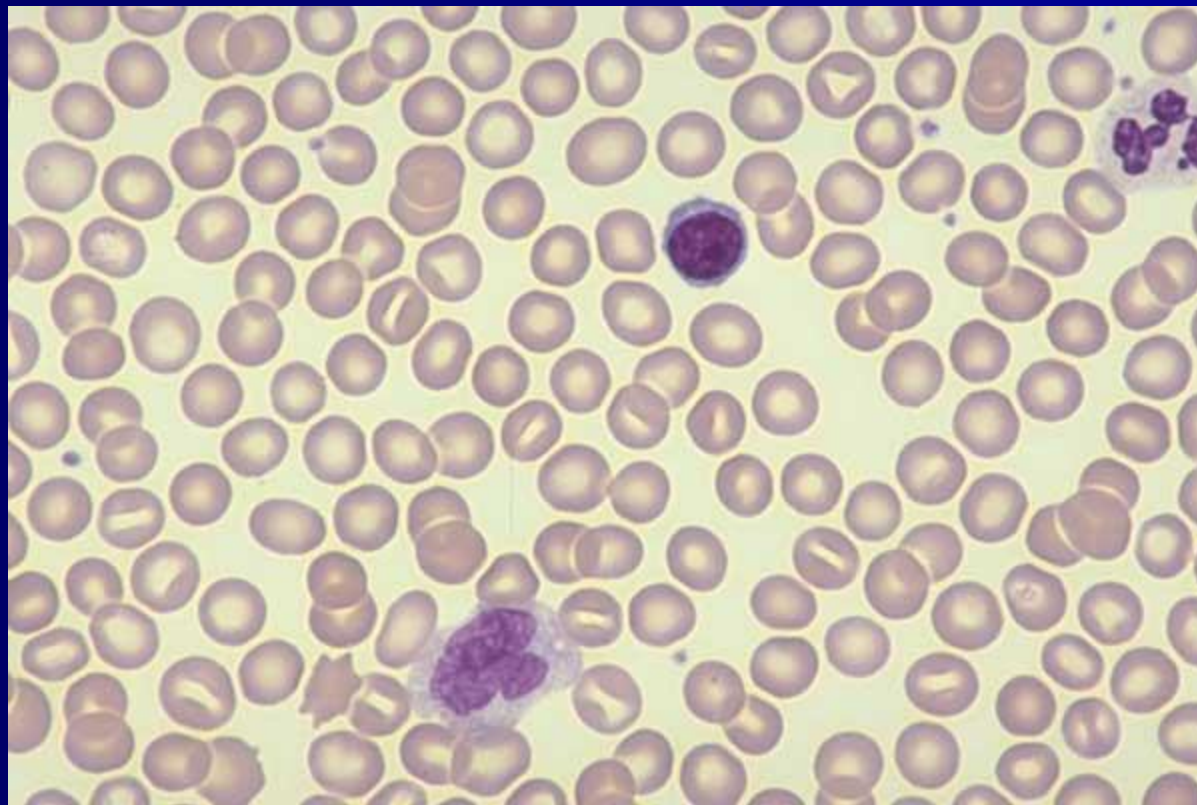




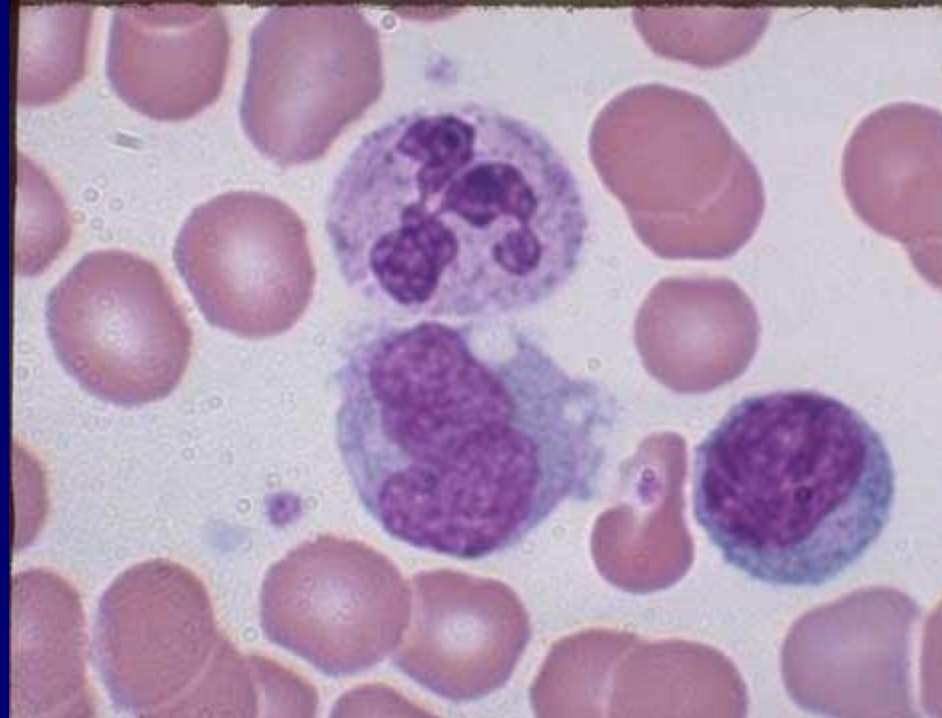
One Segmented *Neutrophil* and 1 *Monocyte* (band shaped nucleus). Note differences in chromatin and cytoplasm color



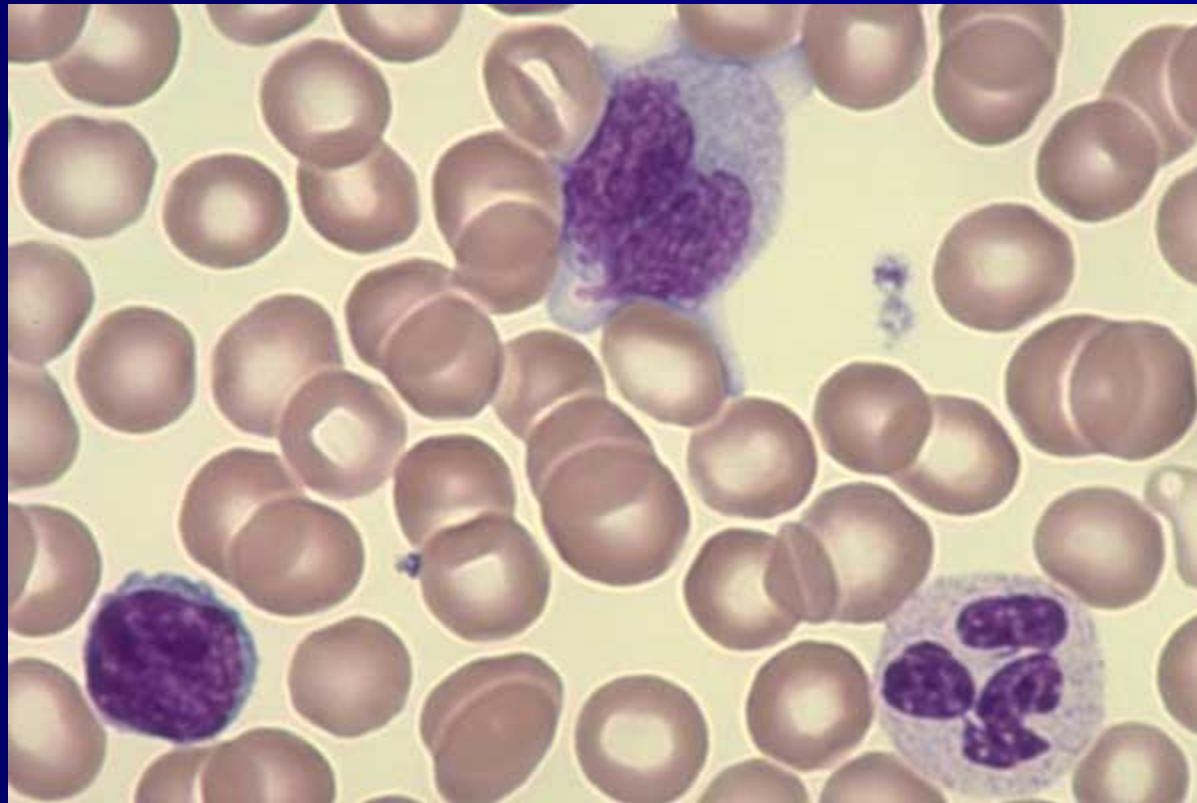
# One Lymphocyte, 1 Monocyte, 1 Segmented Neutrophil



**One Monocyte, 1 Lymphocyte,  
1 Segmented Neutrophil**

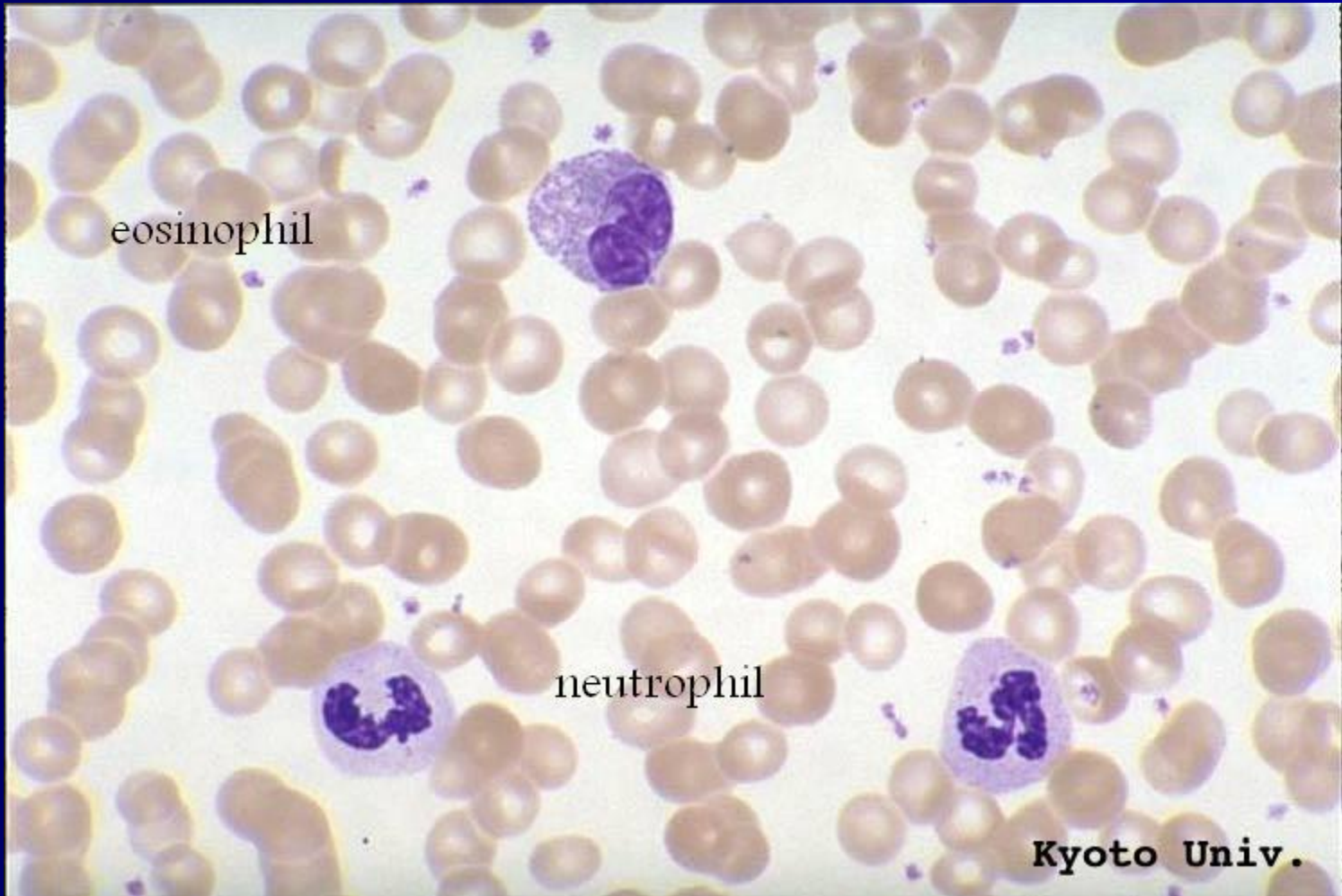


# One small Lymphocyte, 1 Monocyte, 1 Segmented Neutrophil



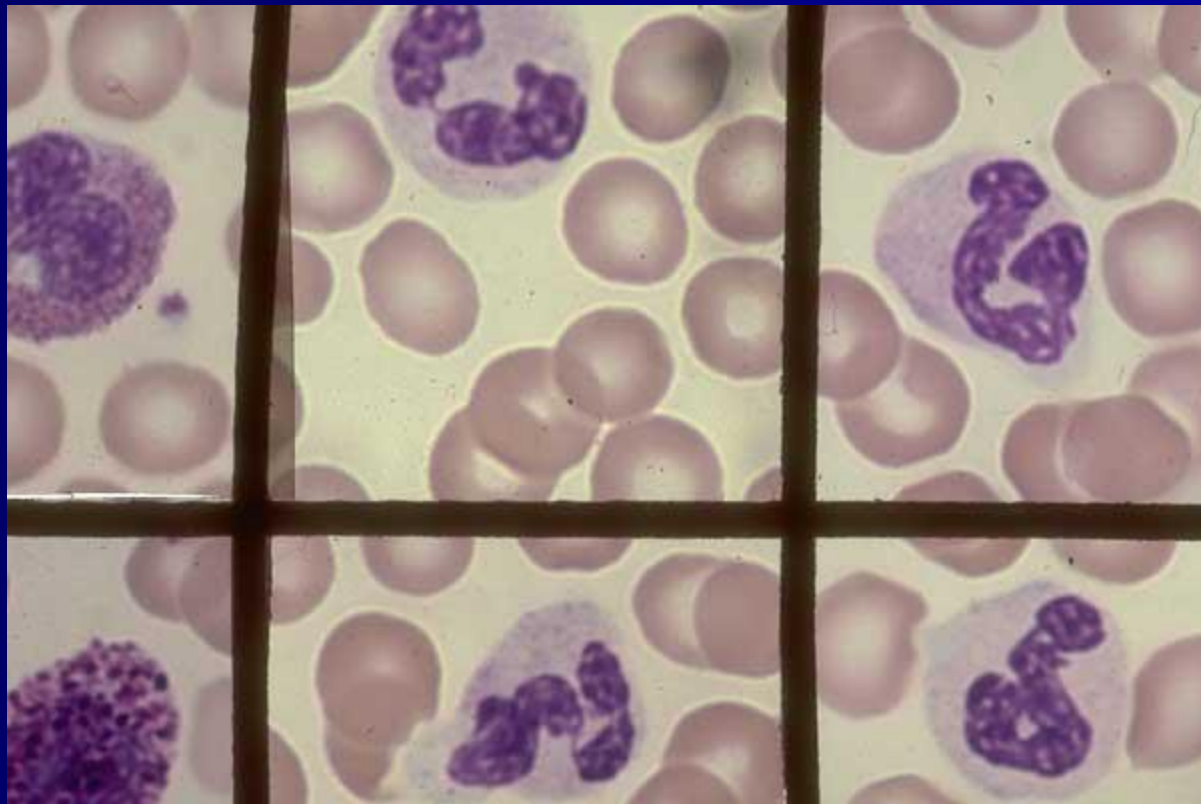


# EOS & NEUT



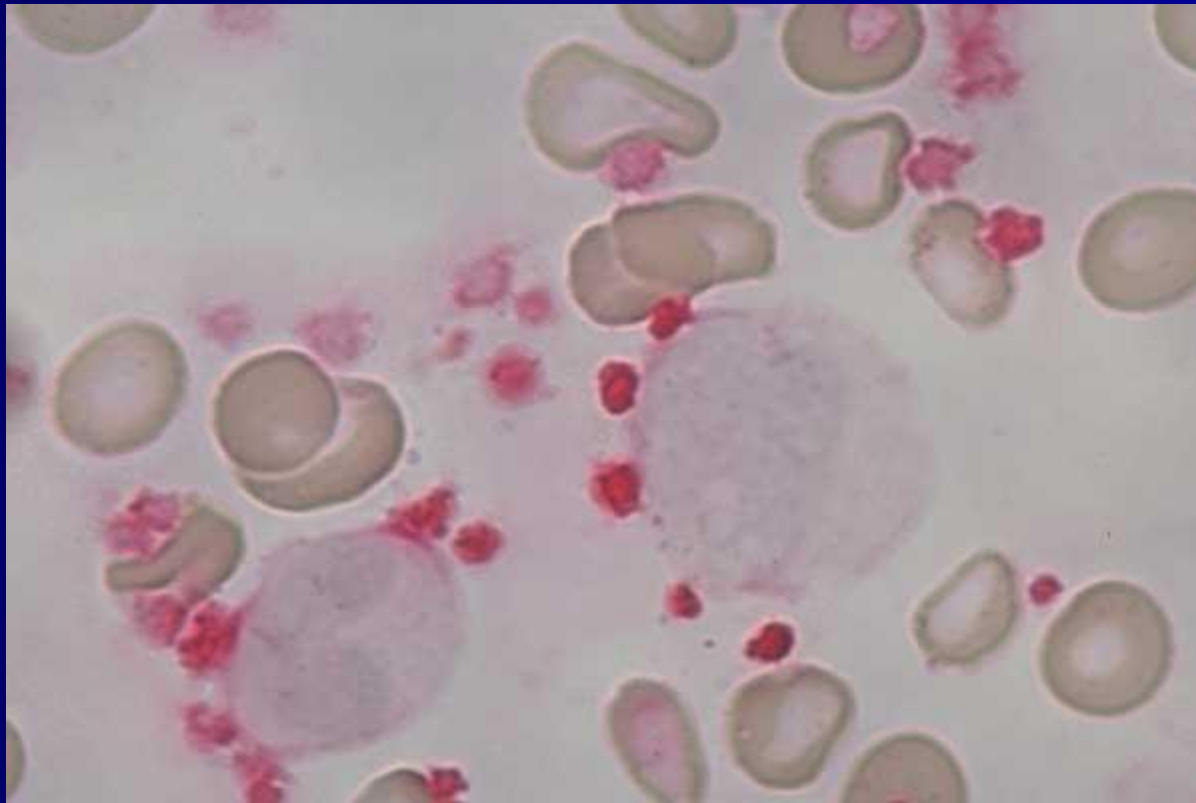


Four late Neutrophils, 1 Eosinophil (top left), 1 Basophile (lower left); composite.  
*Normal blood*

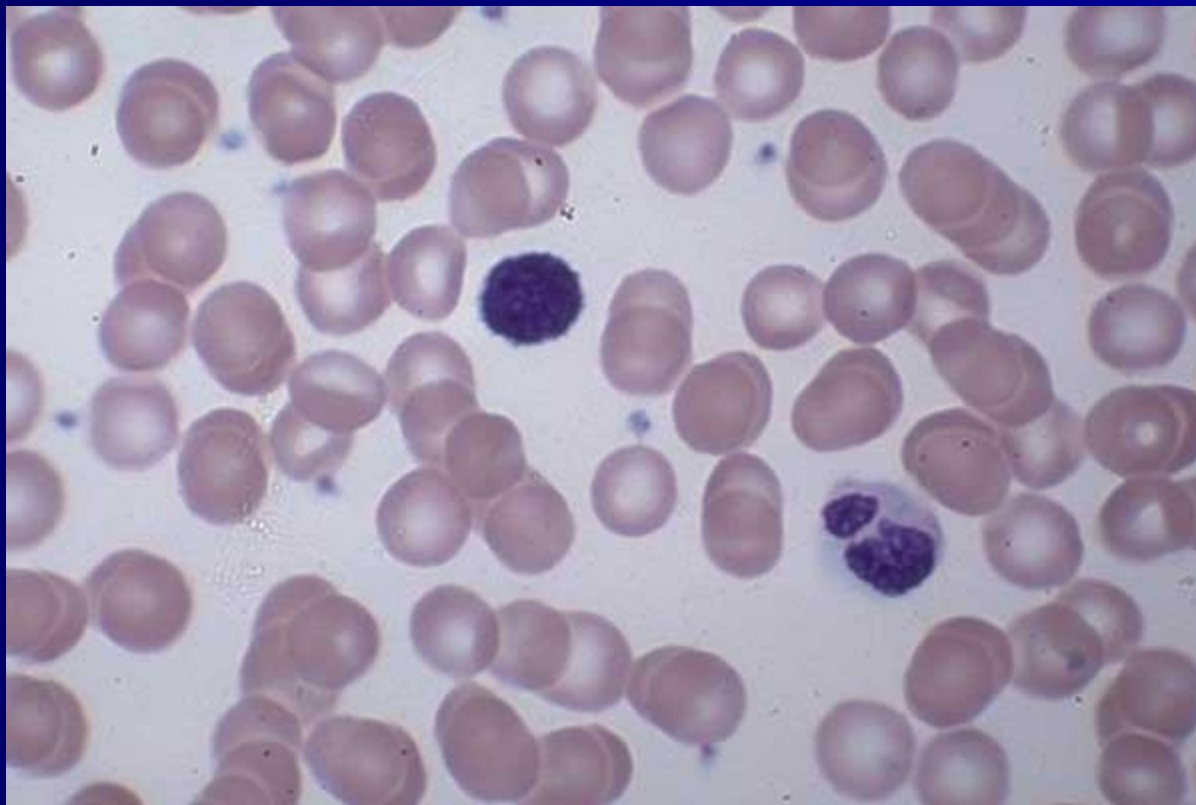


# *Platelets, Neutrophil, Monocyte,*

**GP IIb/IIIa stain**

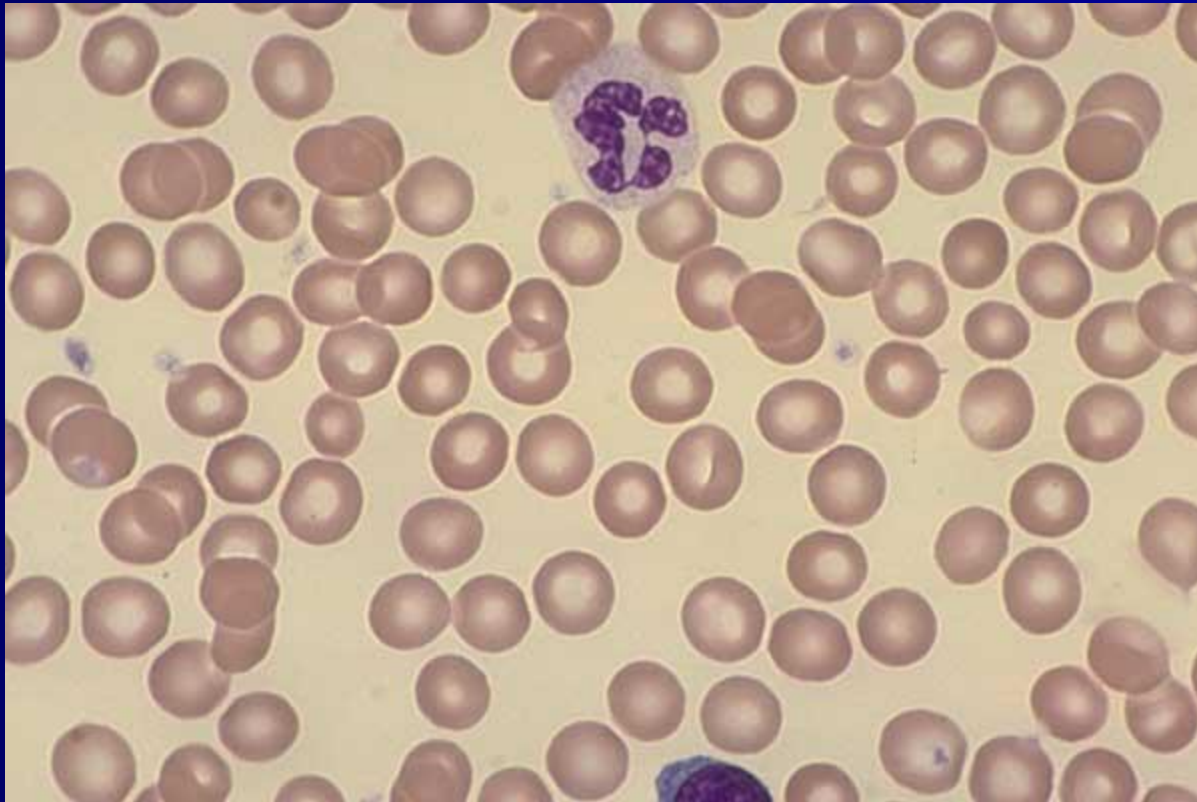


# Normal blood - Dense area, Lymphocyte, Segmented Neutrophil



*Normal blood,*

# *Segmented Neutrophil, Small Lymphocyte*



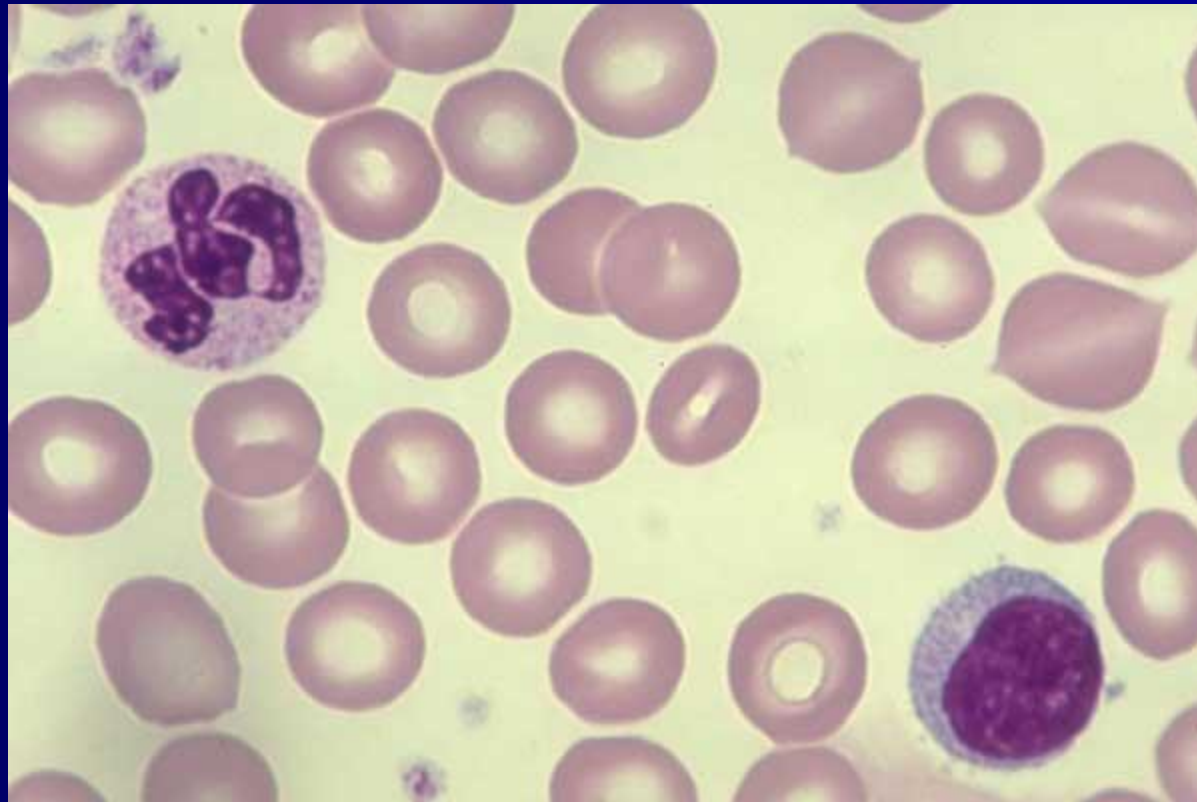


**Normal blood,**  
Segmented and Hypersegmented Neutrophils

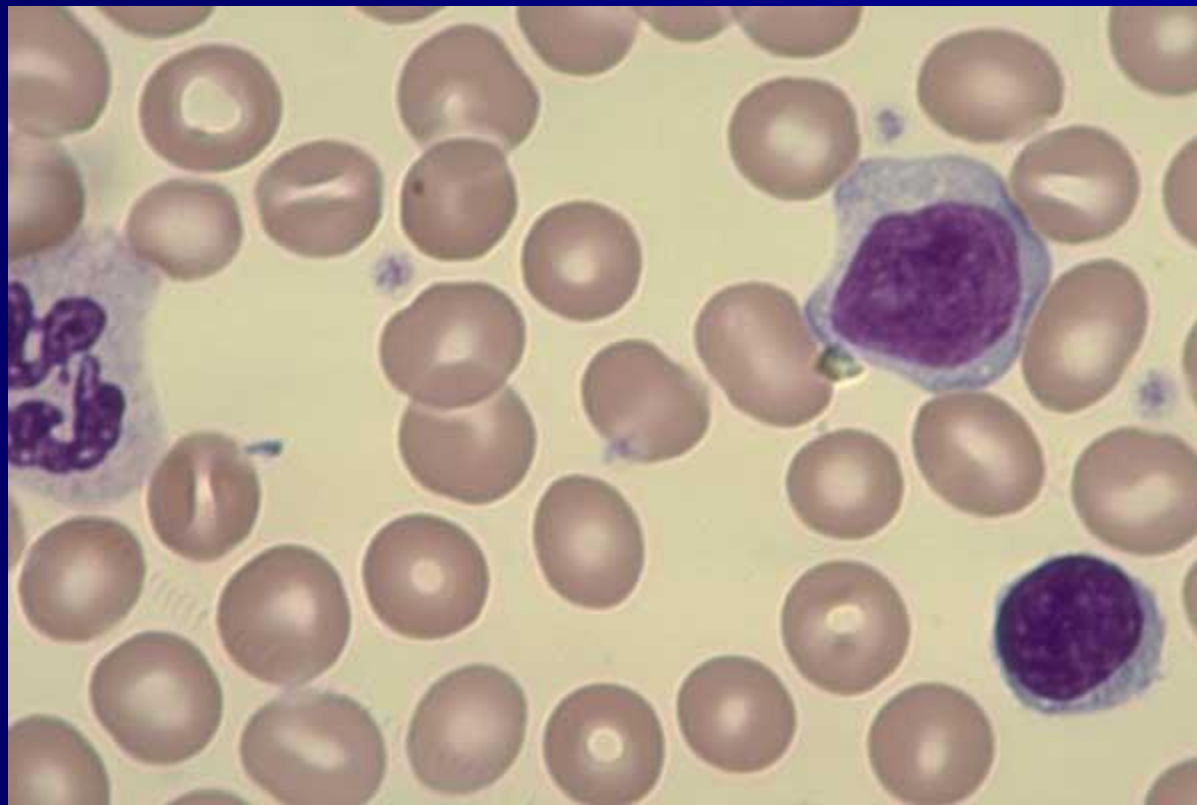


# ***Segmented Neutrophil, Lymphocyte,***

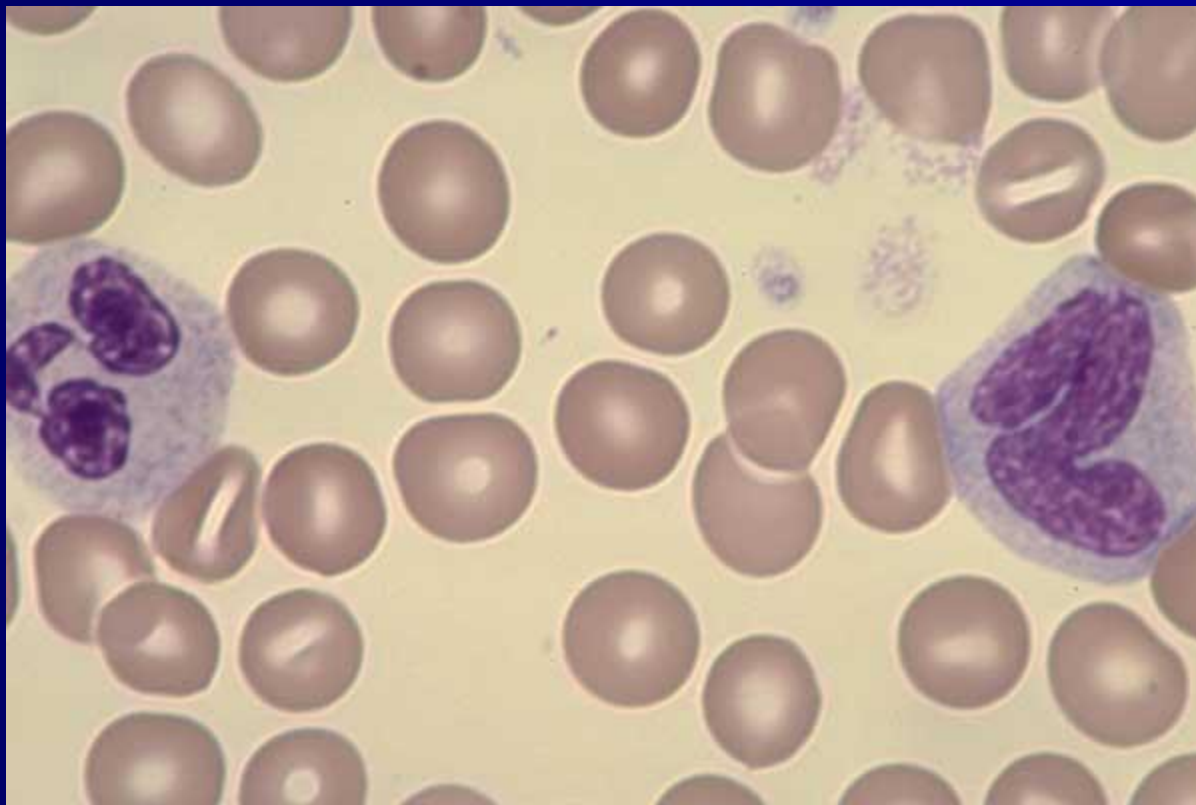
*Normal blood*



One Segmented Neutrophil, 1 Large Lymphocyte, 1 Small Lymphocyte

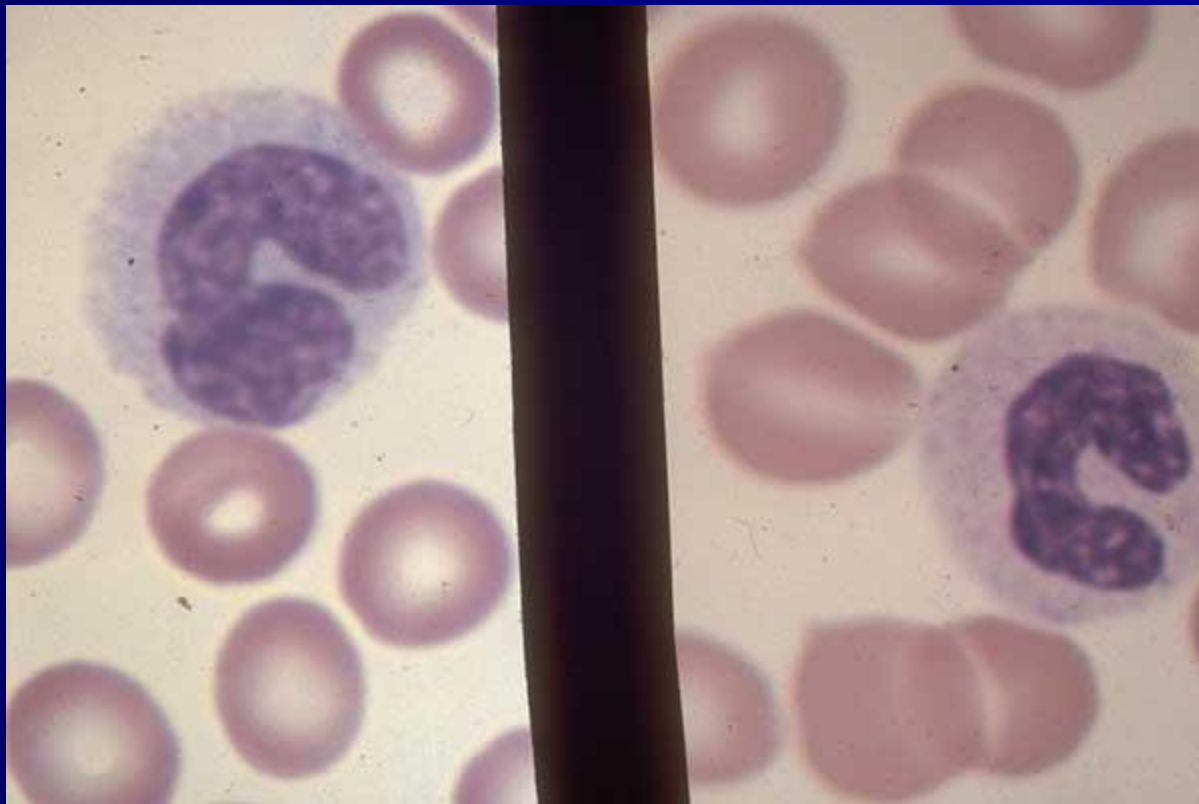


*One segmented Neutrophil, 1 Monocyte with a band shaped nucleus. Compare nuclear chromatin and cytoplasmic color.*

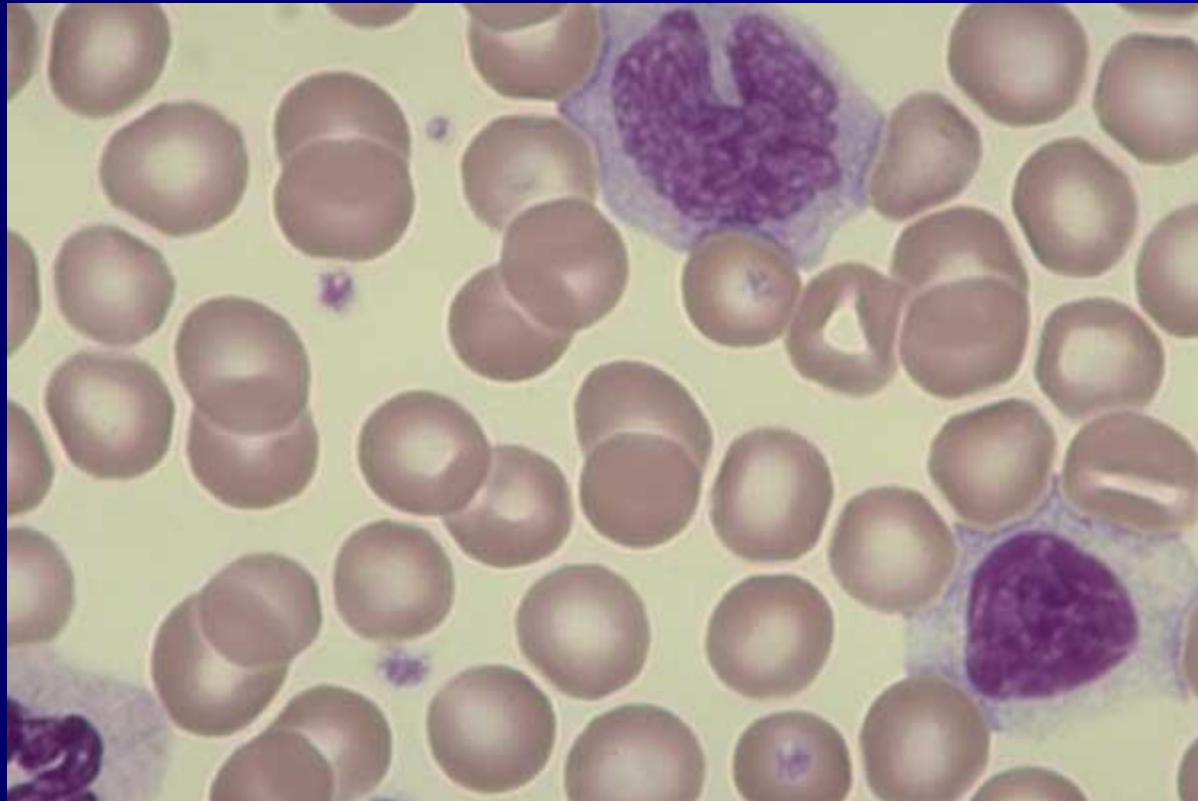




One **Monocyte** with a band shaped nucleus in left frame, 1 **Band Neutrophil** in right frame. Compare nuclear chromatin and cytoplasmic color

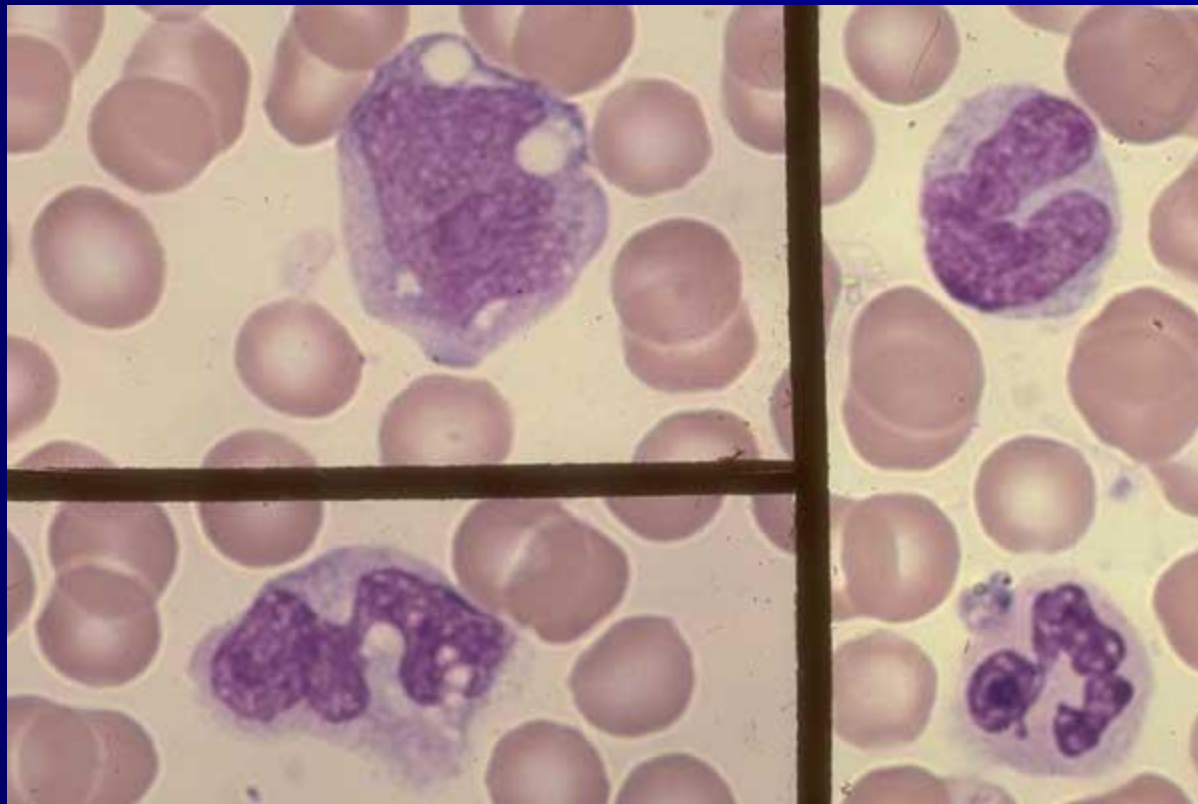


One Monocyte, 1 Segmented Neutrophil,  
1 large (reactive) Lymphocyte at lower right

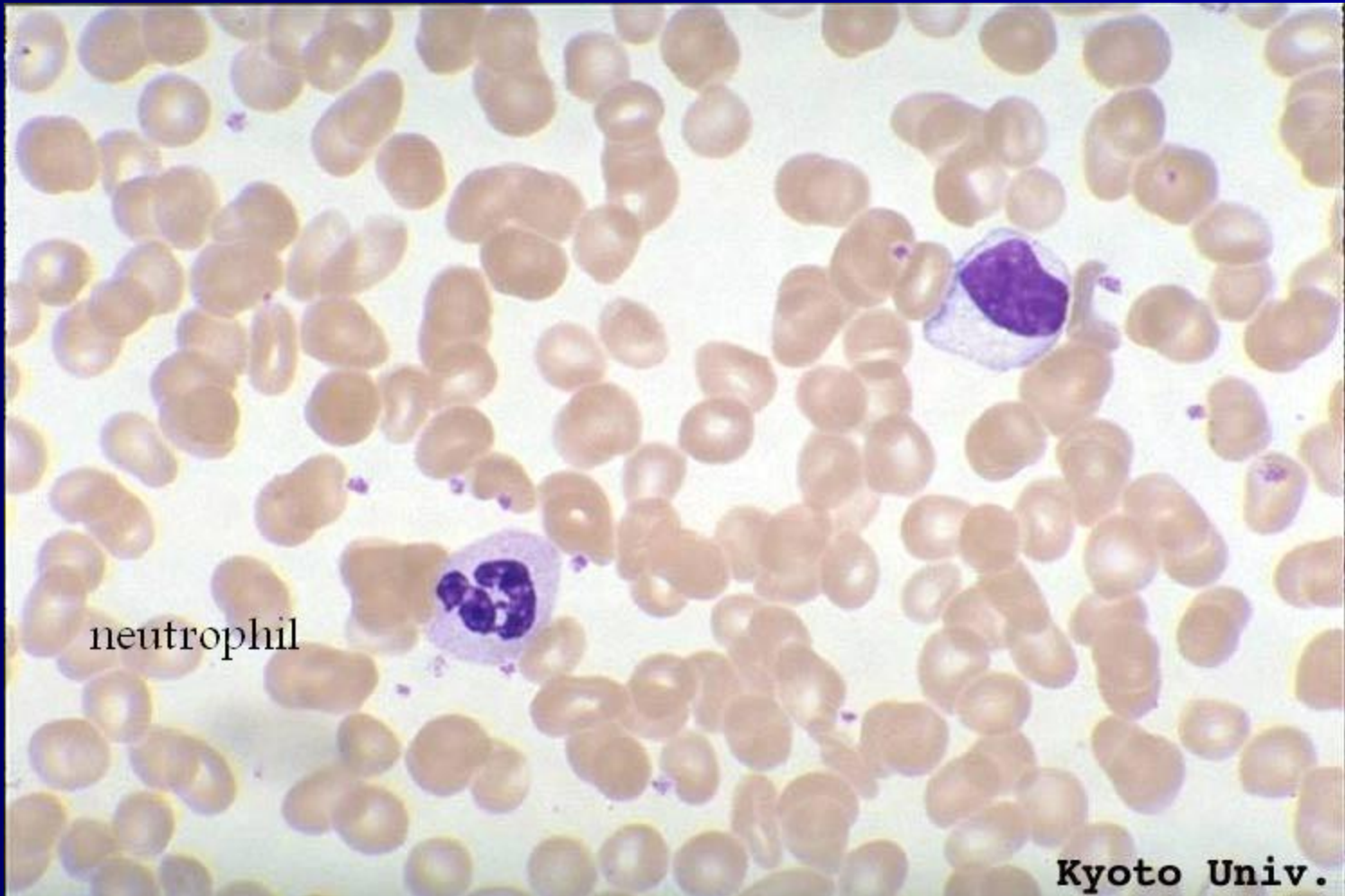


# Monocytes, Segmented Neutrophil

Normal blood



# NEUTROPHIL





# Band Eosinophil, Mature Neutrophil

Normal blood



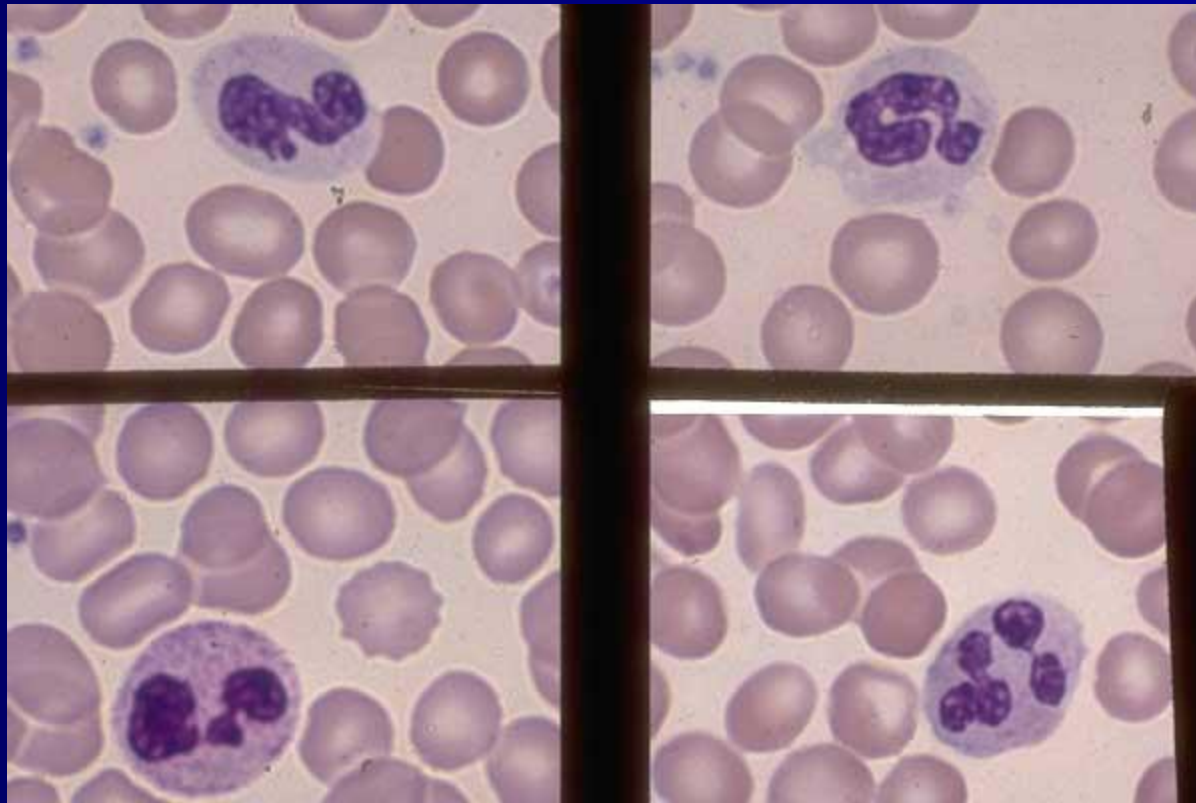
# Normal blood, Segmented Neutrophils, Lymphocyte



# Segmented Neutrophils and Band Neutrophils

composite; 2 Band Neutrophils (top frames) and

2 Segmented Neutrophils (lower frame)

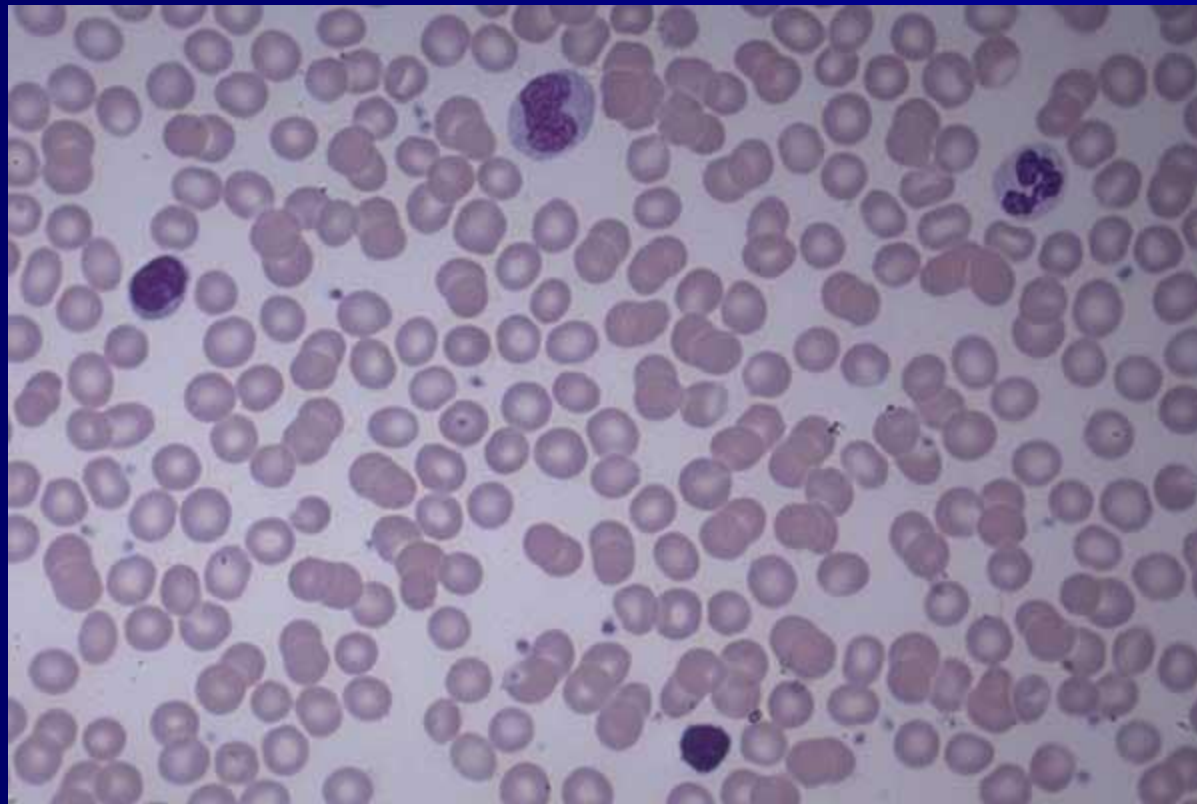


One Segmented Neutrophil,  
1 Band Neutrophil, 1 Lymphocyte.





One *Segmented Neutrophil*,  
1 *Monocyte*, 2 *Lymphocytes*



**One Segmented Neutrophil, 1 Small Lymphocyte with speckulated cytoplasm, 1 Monocyte with extended cytoplasm**

