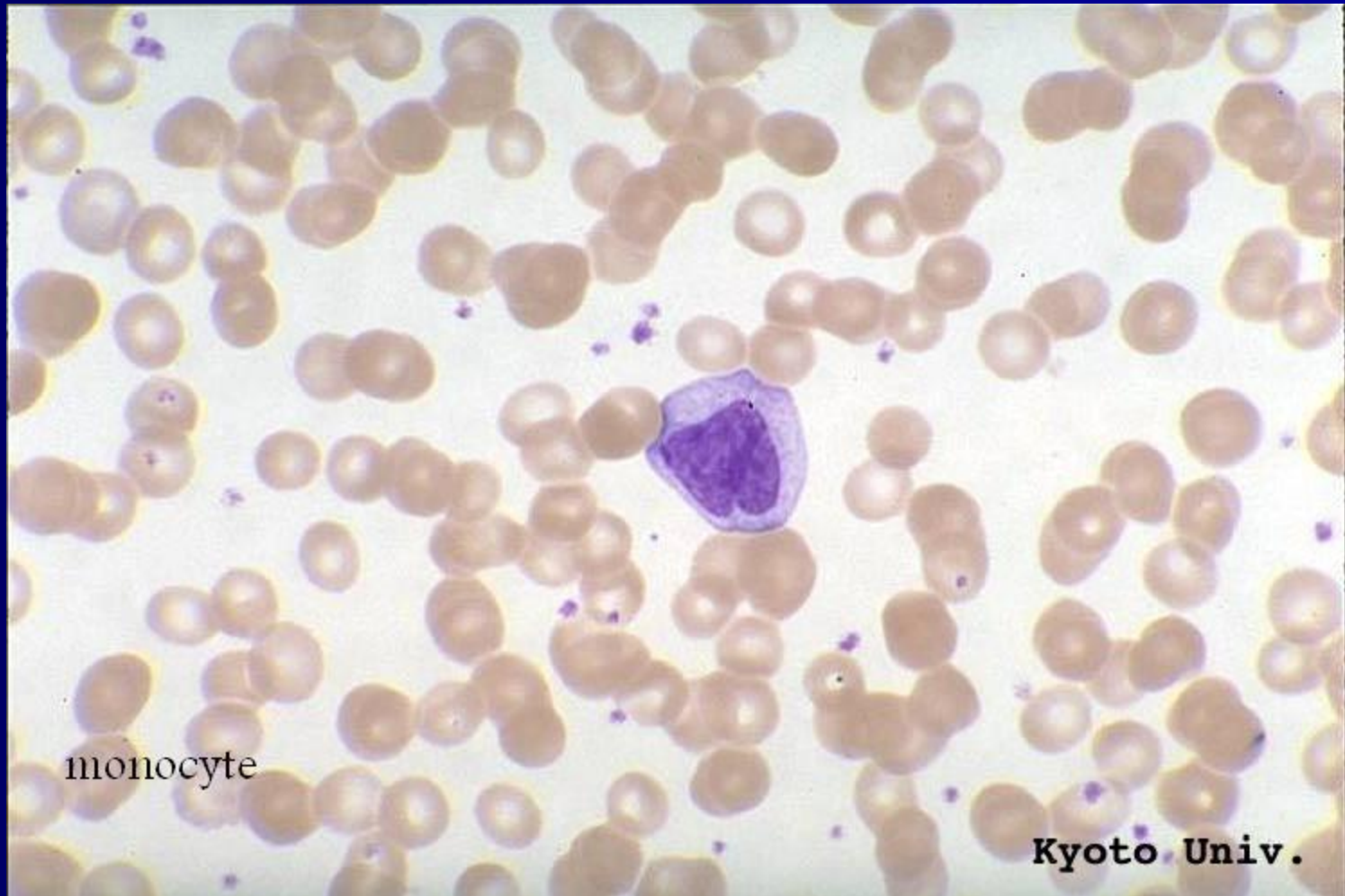


Monocyte



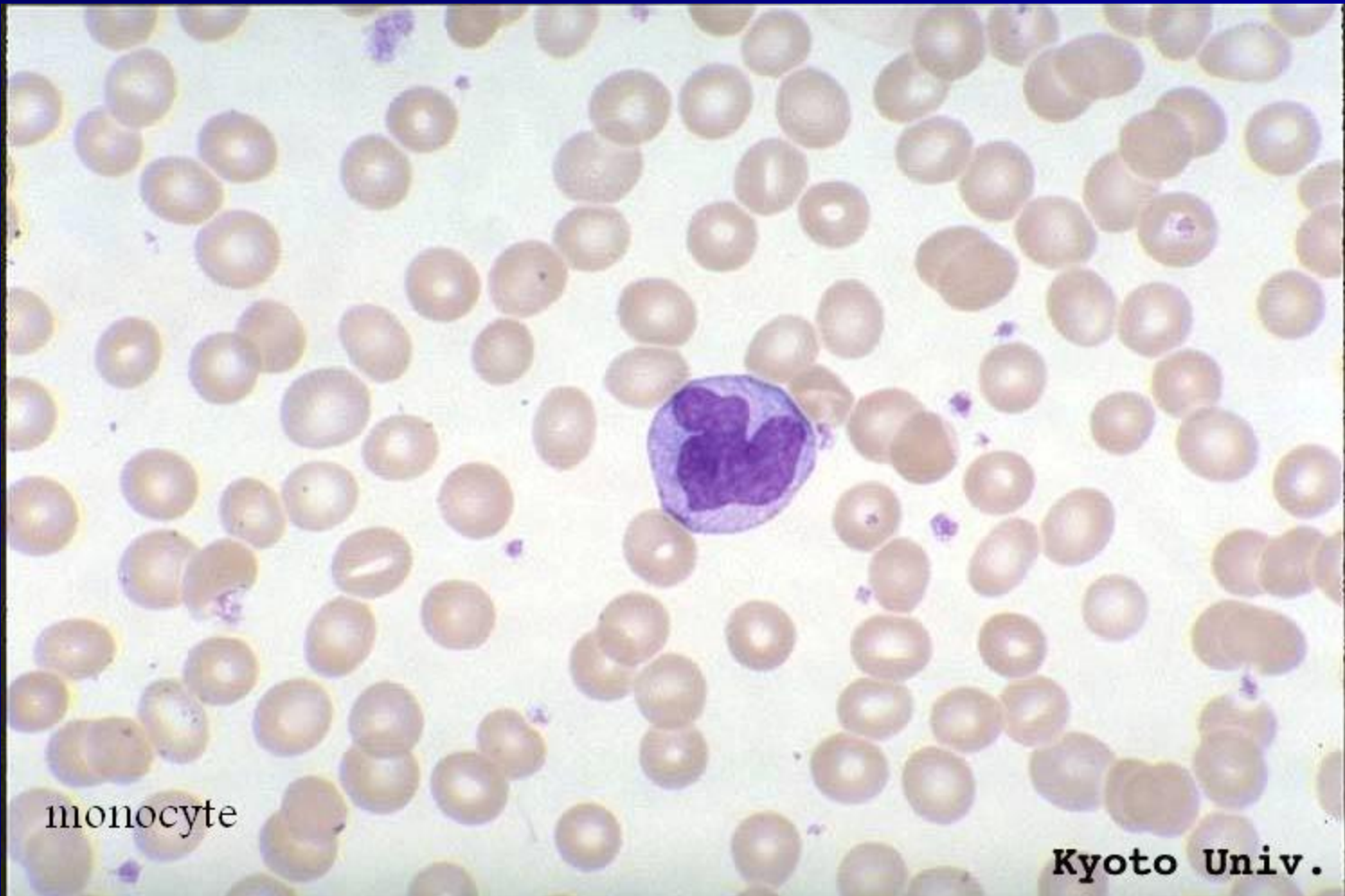
Monocyte



monocyte

Kyoto Univ.

Monocyte

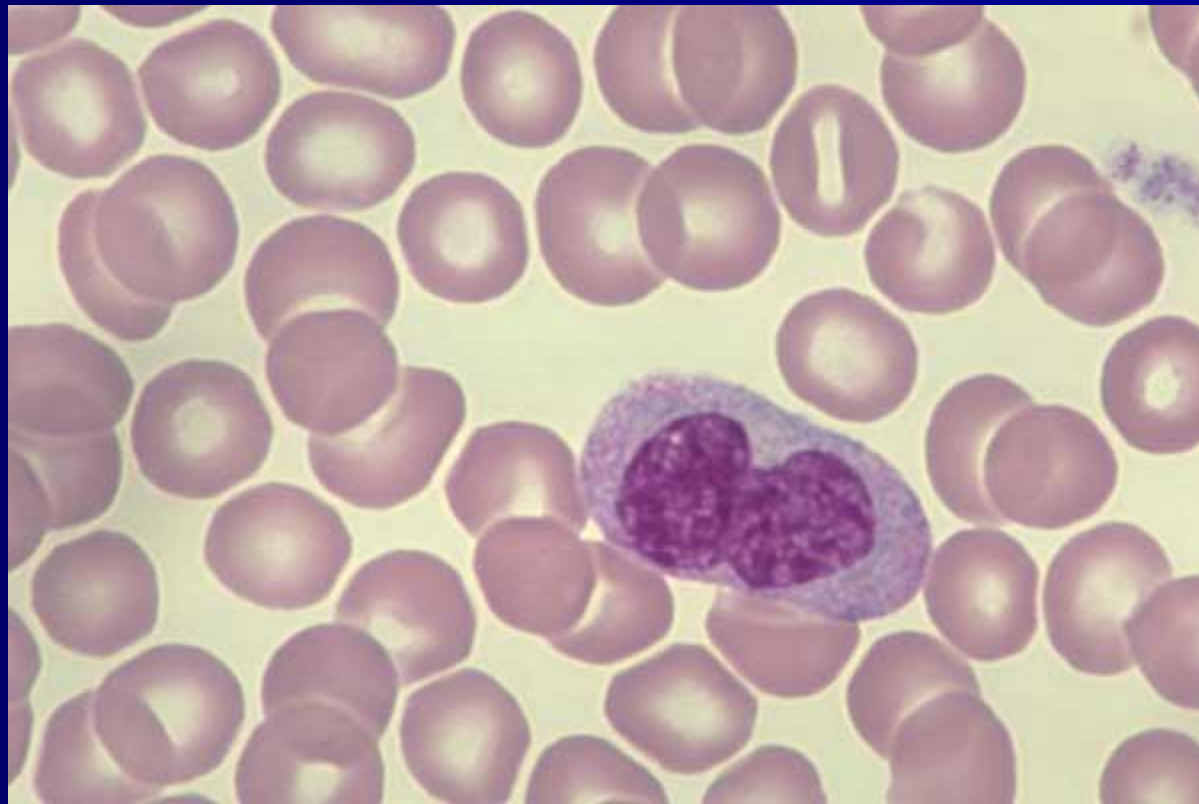


monocyte

Kyoto Univ.

Monocyte

Normal blood

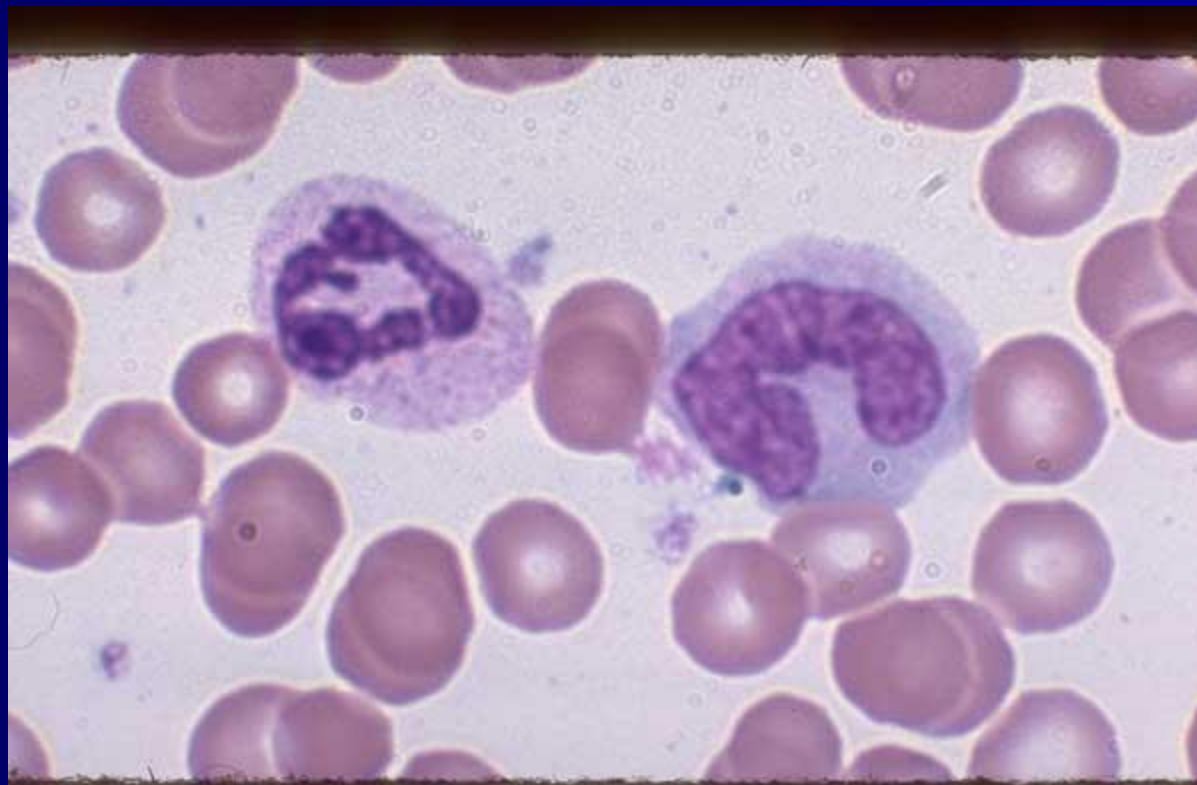


Monocyte,

Normal blood



One Segmented Neutrophil and 1 Monocyte (band shaped nucleus). Note differences in chromatin and cytoplasm color



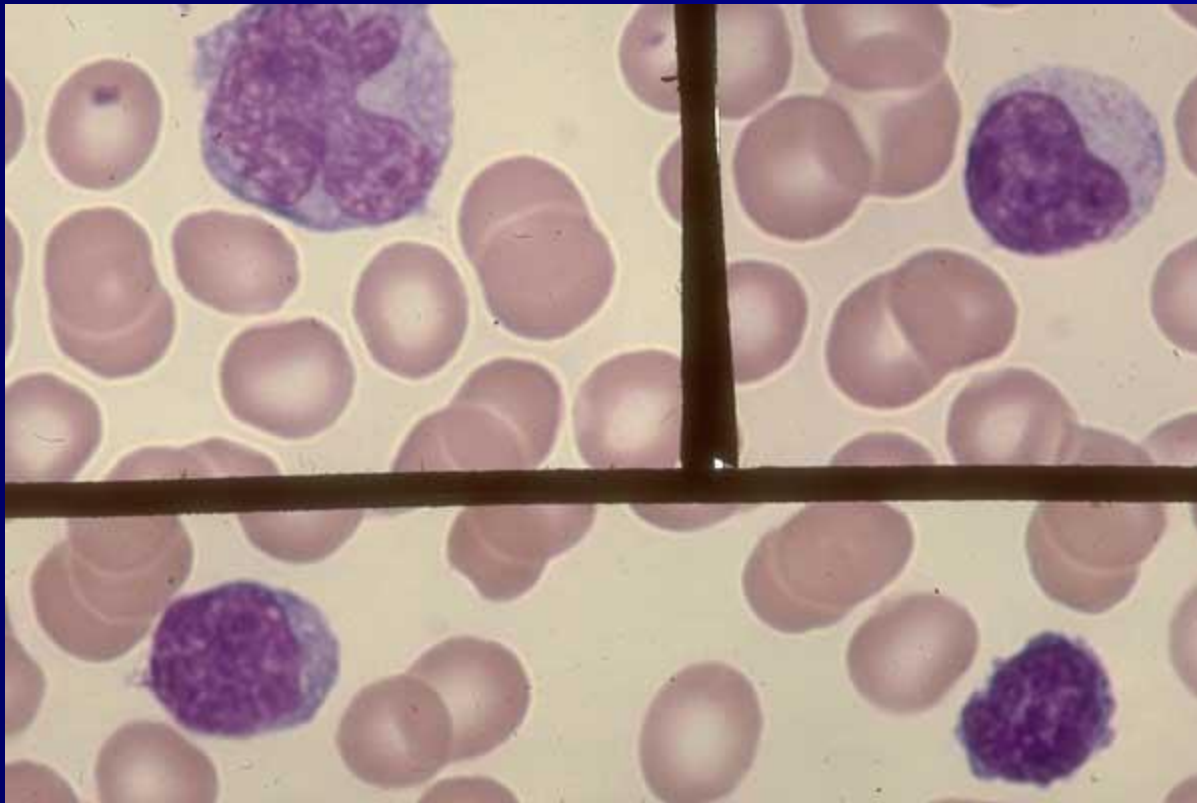
One Lymphocyte, 1 Monocyte, 1 Segmented Neutrophil



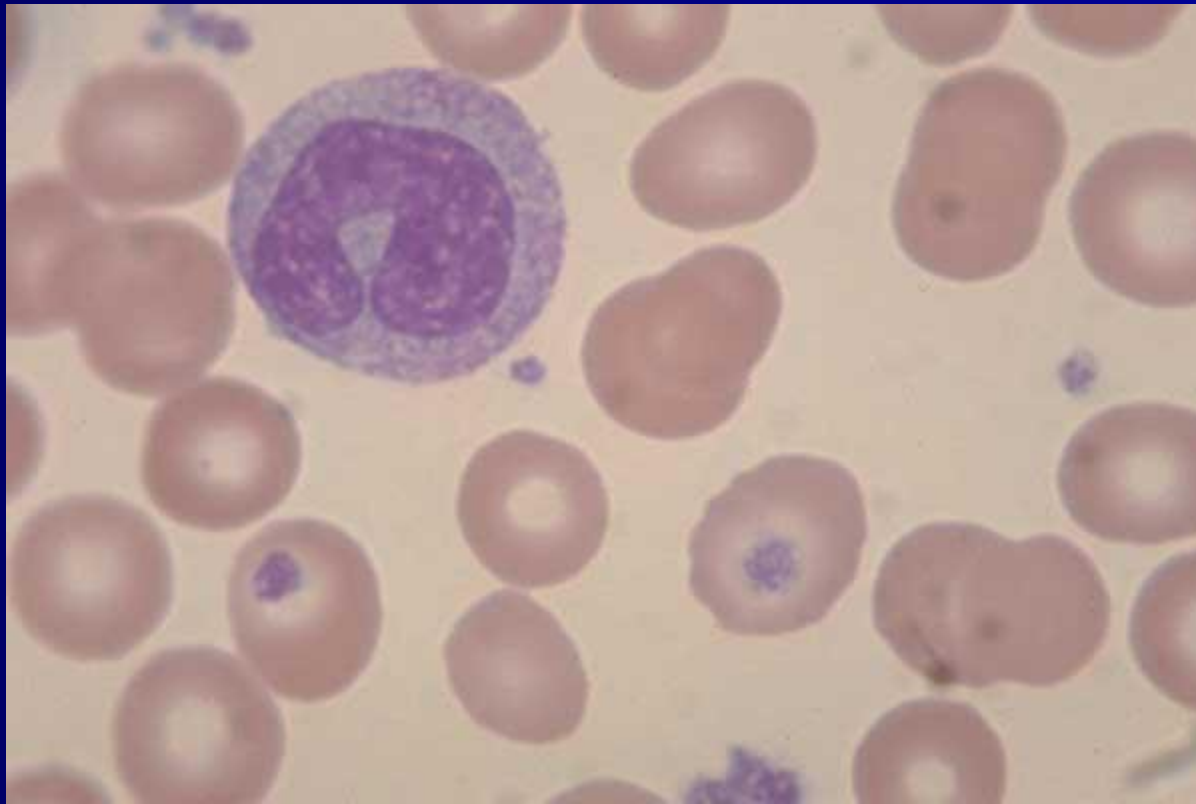
Lymphocyte, 1 Monocyte (band shaped nucleus)



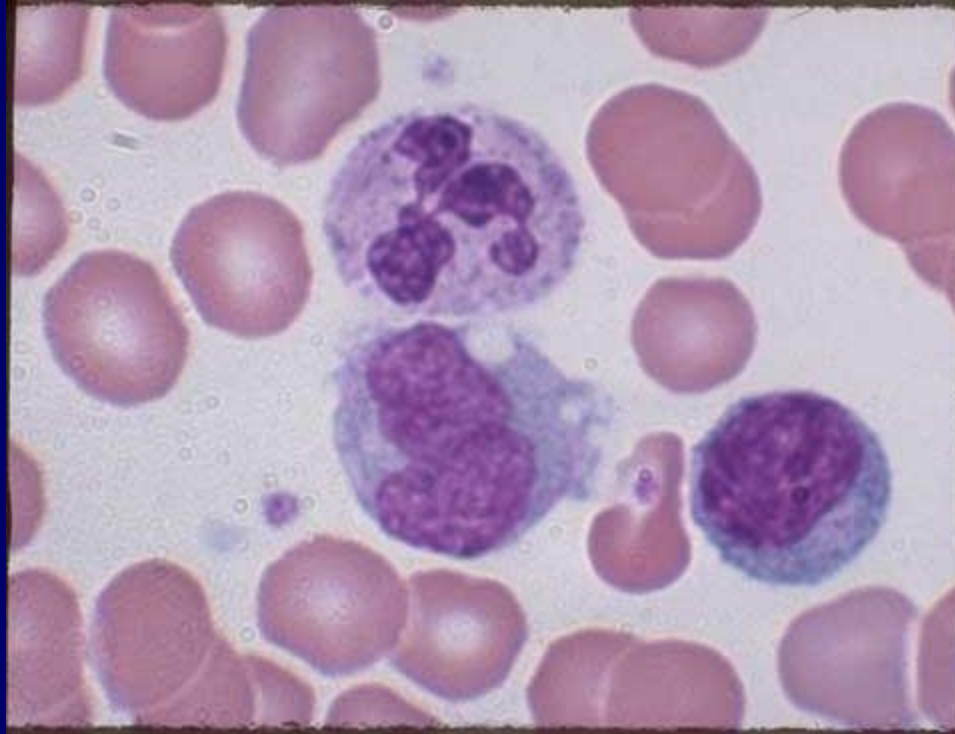
Three Lymphocytes (1 large granular lymphocyte in top right frame and 2 small lymphocytes in lower frame), 1 Monocyte in top left frame



One *Monocyte* - band shaped nucleus.



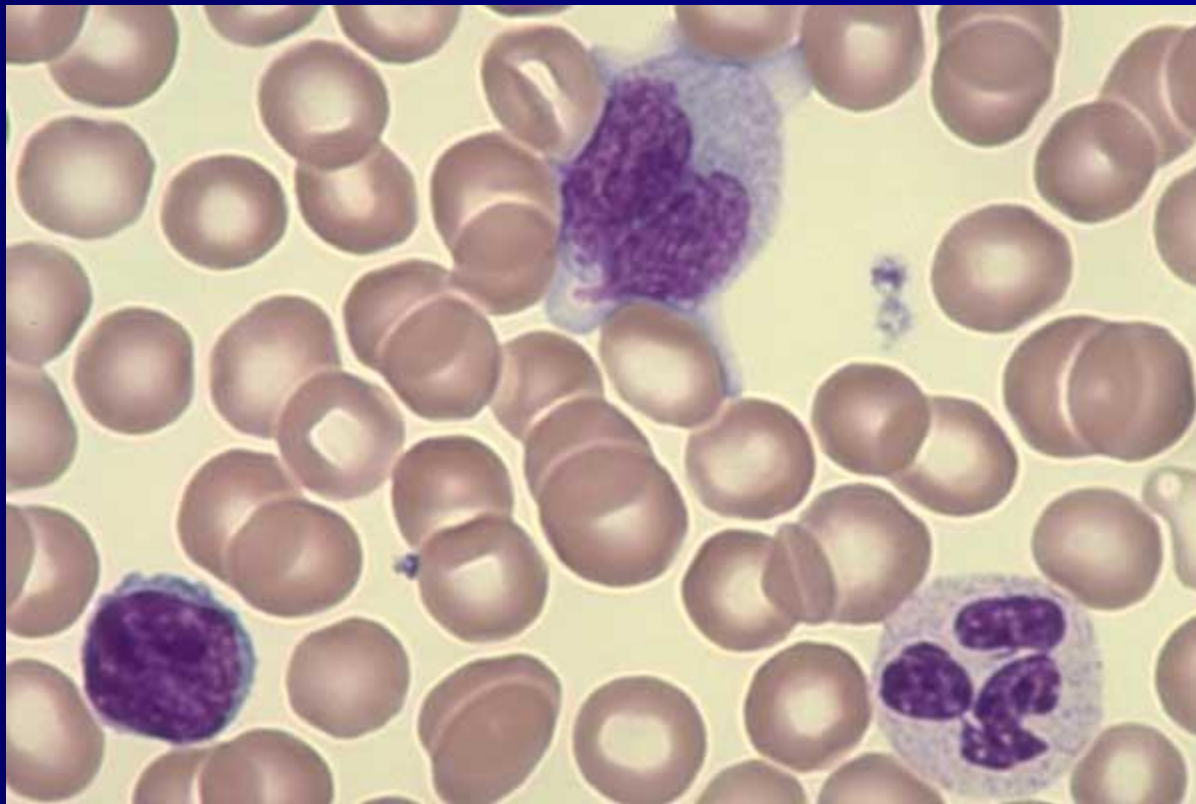
One Monocyte, 1 Lymphocyte,
1 Segmented Neutrophil.



One small LYMPHOCYTE

1 MONOCYTE

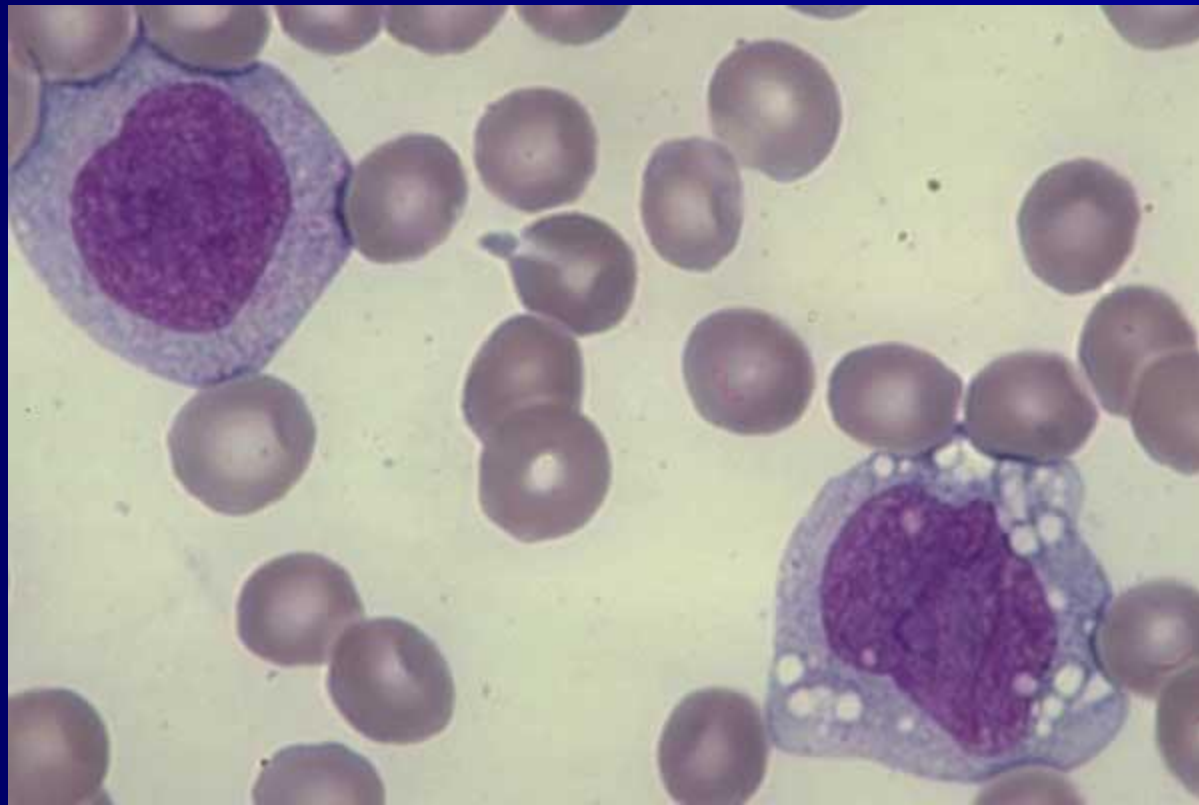
1 Segmented NEUTROPHIL



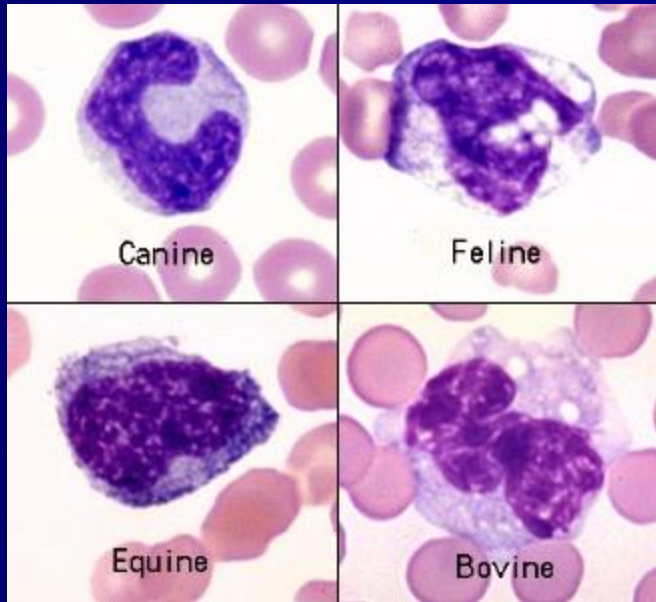
Monocyte with band shaped nucleus and vacuoles



*Two young Monocytes,
1 with many vacuoles*

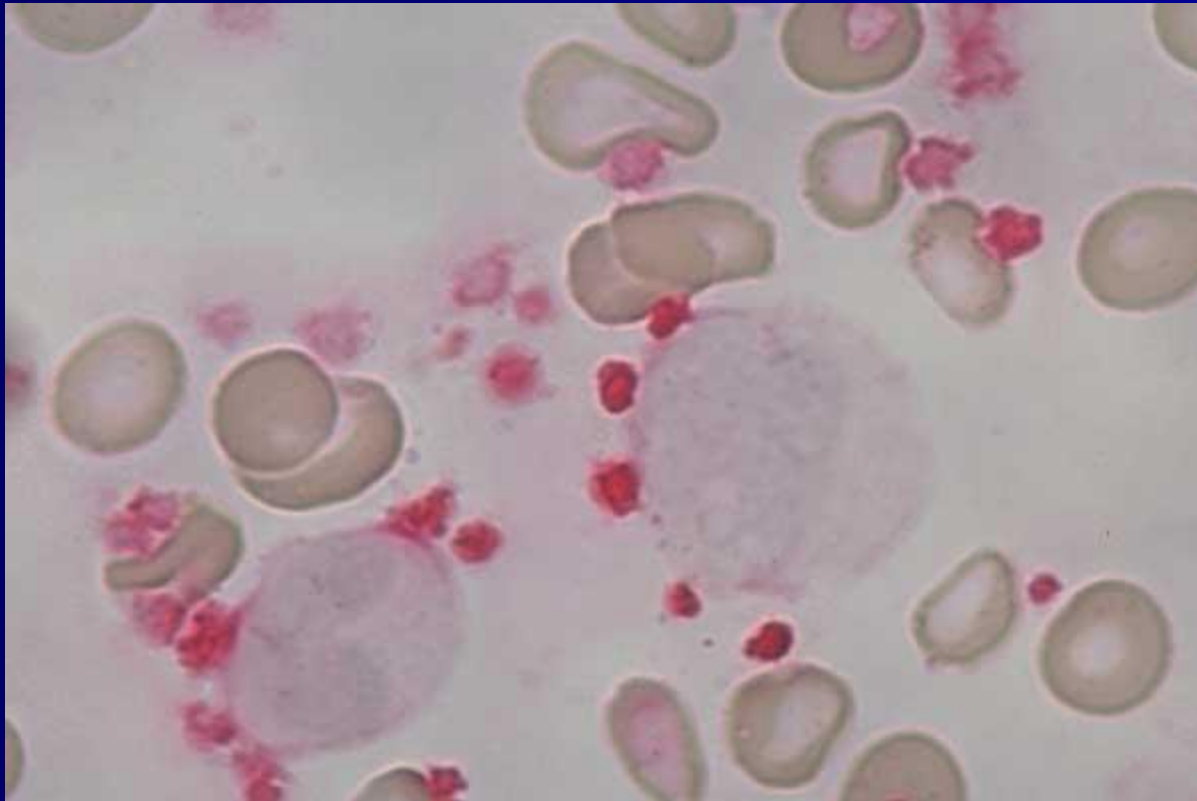


Monocomp



Platelets, Neutrophil, Monocyte,

GP IIb/IIIa stain

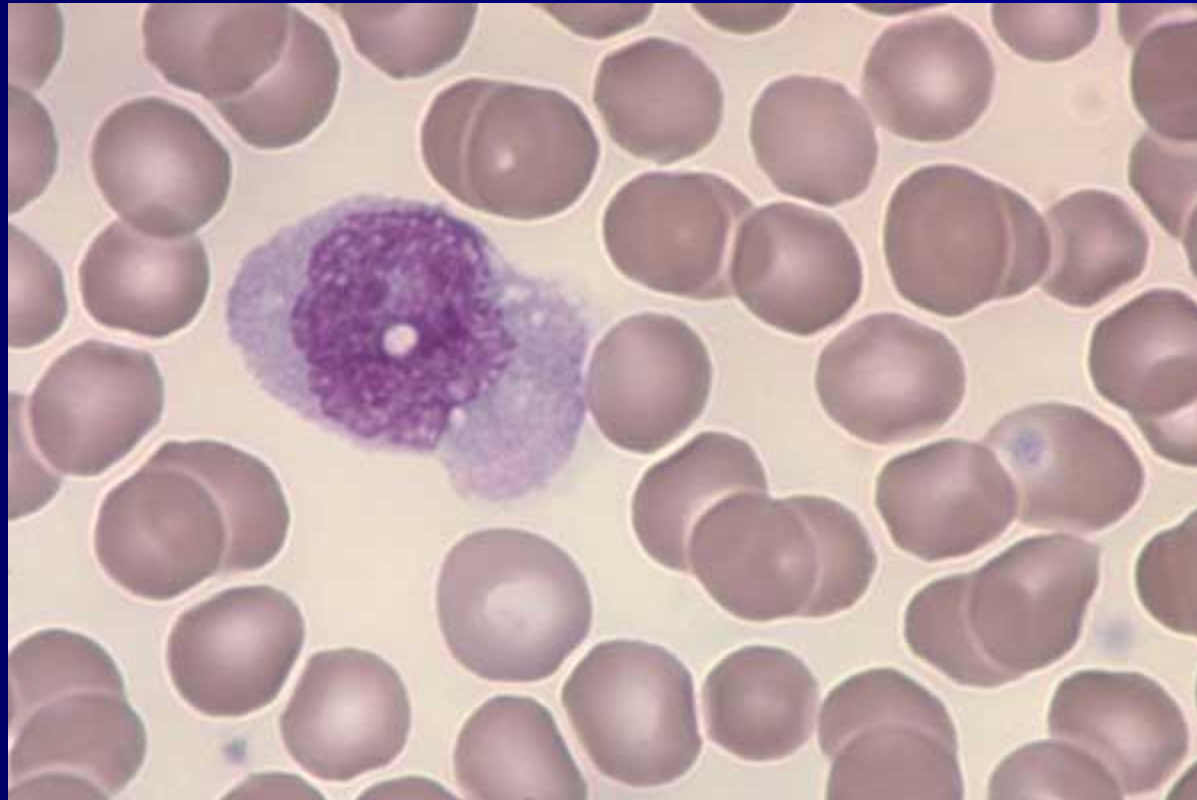


Monocyte

Dense area, Normal blood



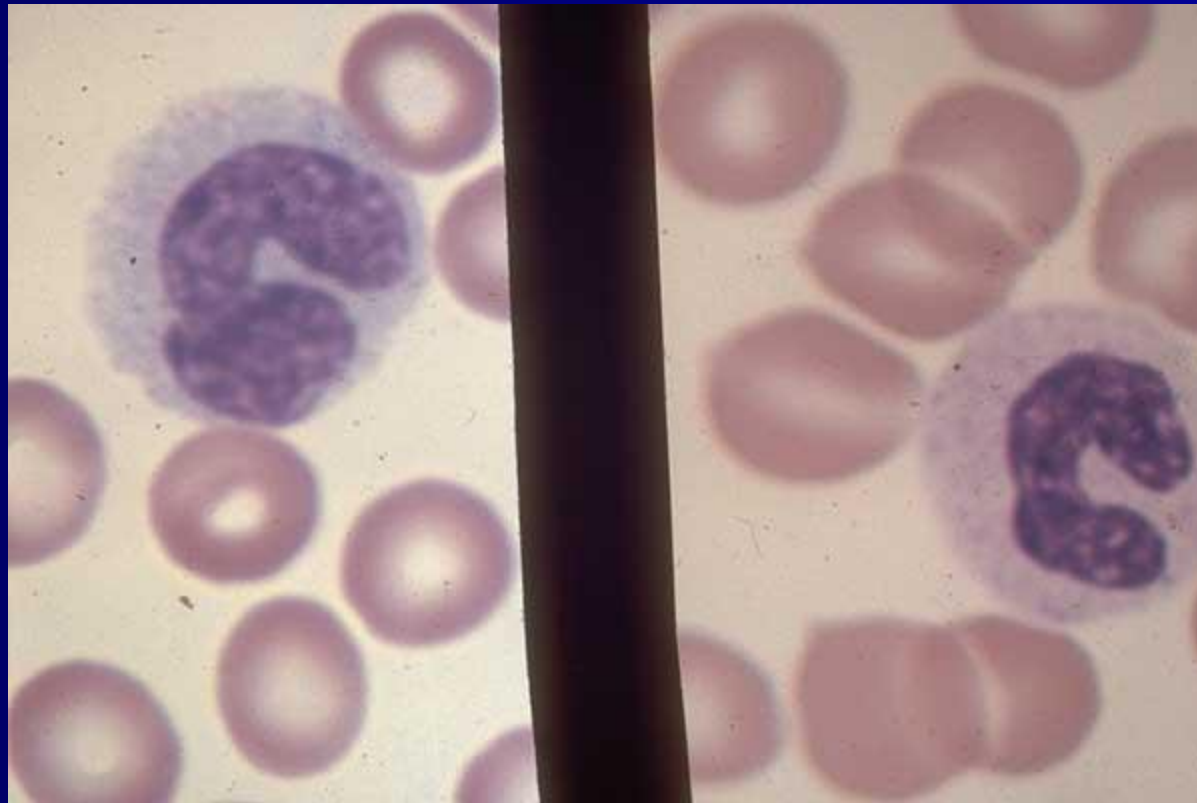
One Monocyte with vacuole in center of nucleus



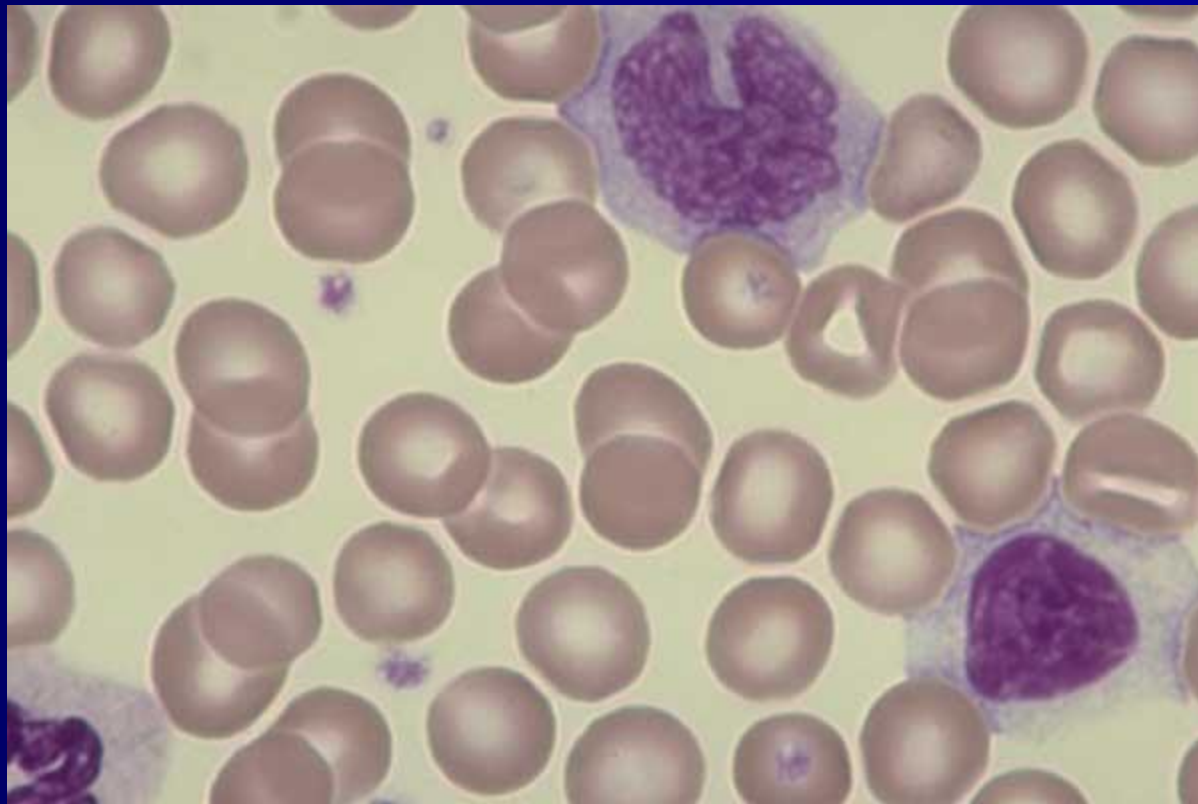
Monocyte with folded nucleus, normal blood



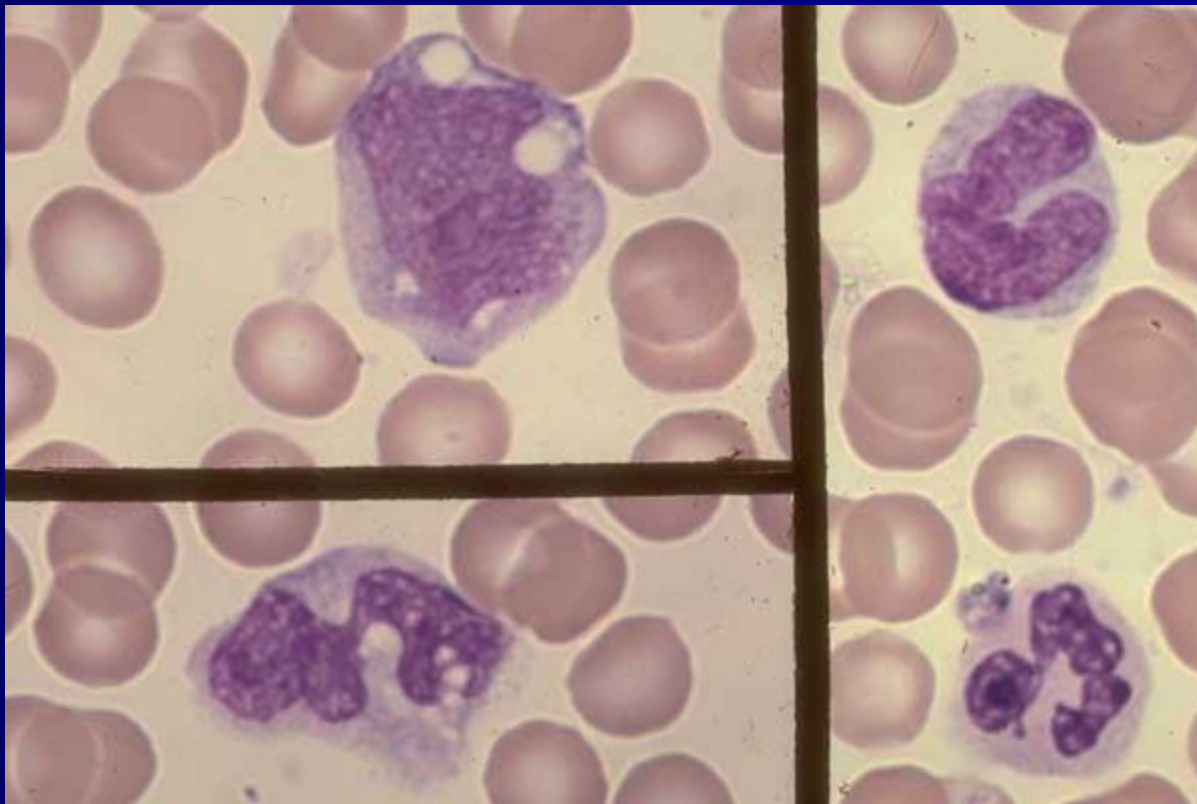
One Monocyte with a band shaped nucleus in left frame, 1 Band Neutrophil in right frame.
Compare nuclear chromatin and cytoplasmic color



*One Monocyte, 1 Segmented Neutrophil, 1 Large (Reactive)
Lymphocyte at lower right*

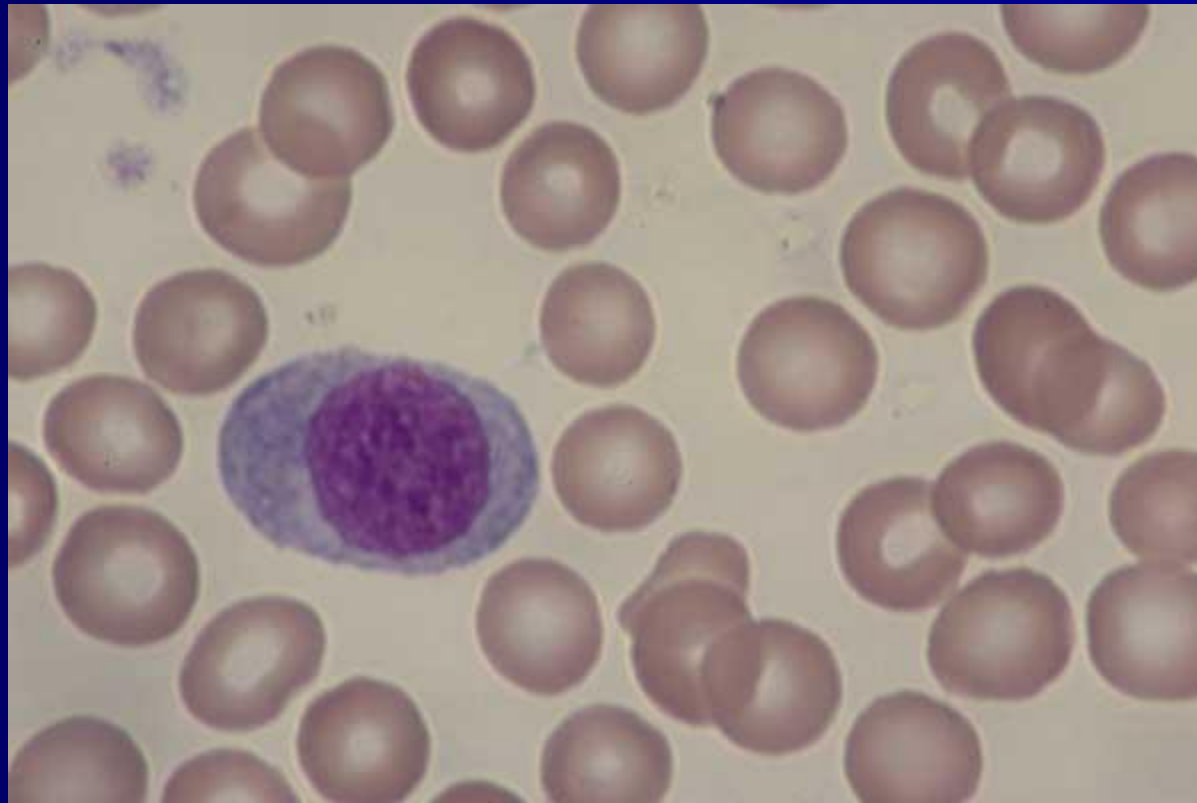


Monocytes, Segmented Neutrophil, *Normal blood*

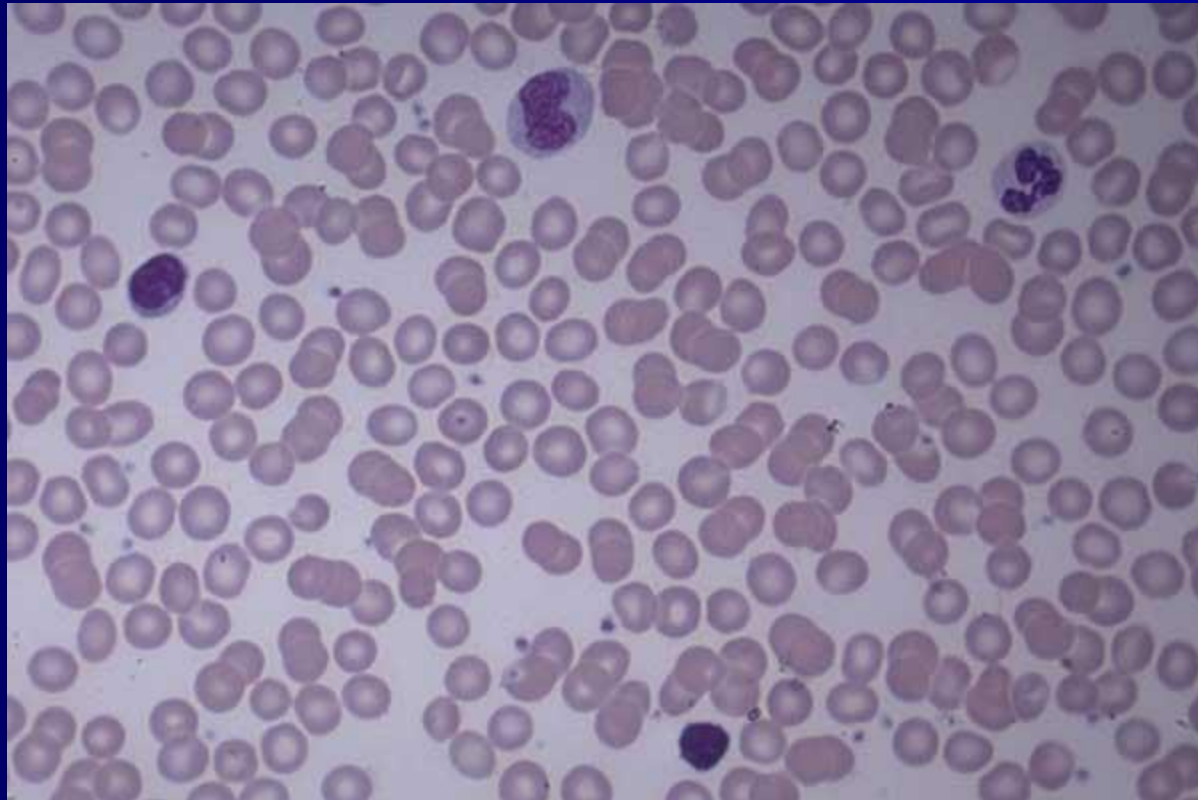


Monocyte

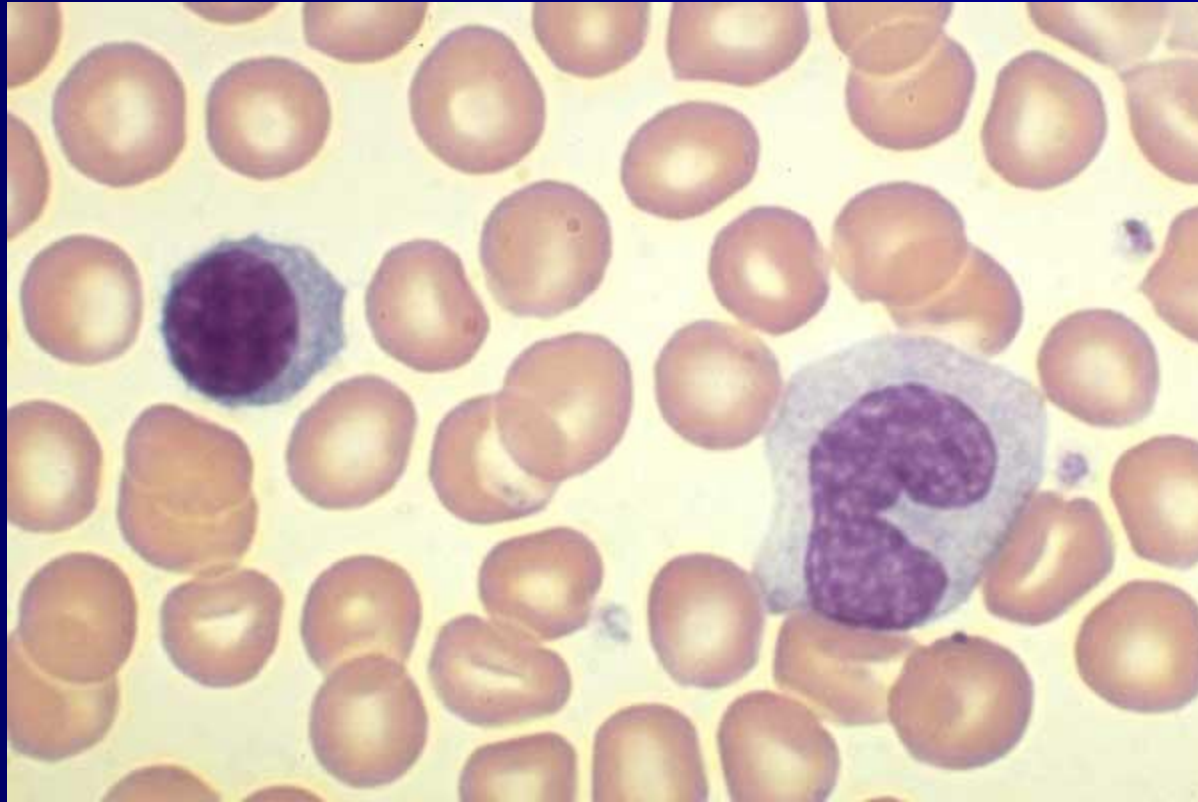
Normal blood



One Segmented Neutrophil, 1 Monocyte, 2 Lymphocytes



One Lymphocyte, 1 Monocyte (band shaped nucleus)



One Monocyte

1 large Lymphocyte (Plasmacytoid)



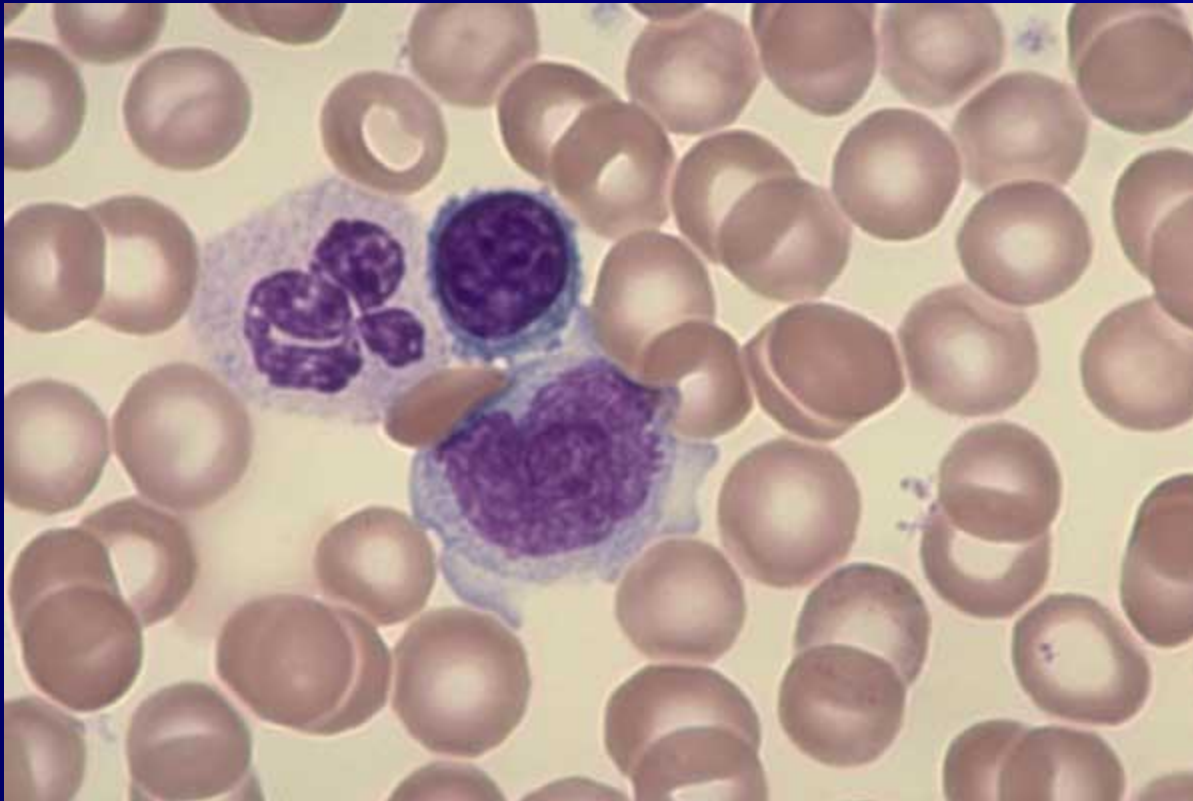
Monocyte *with several small*
vacuoles, **Normal blood**



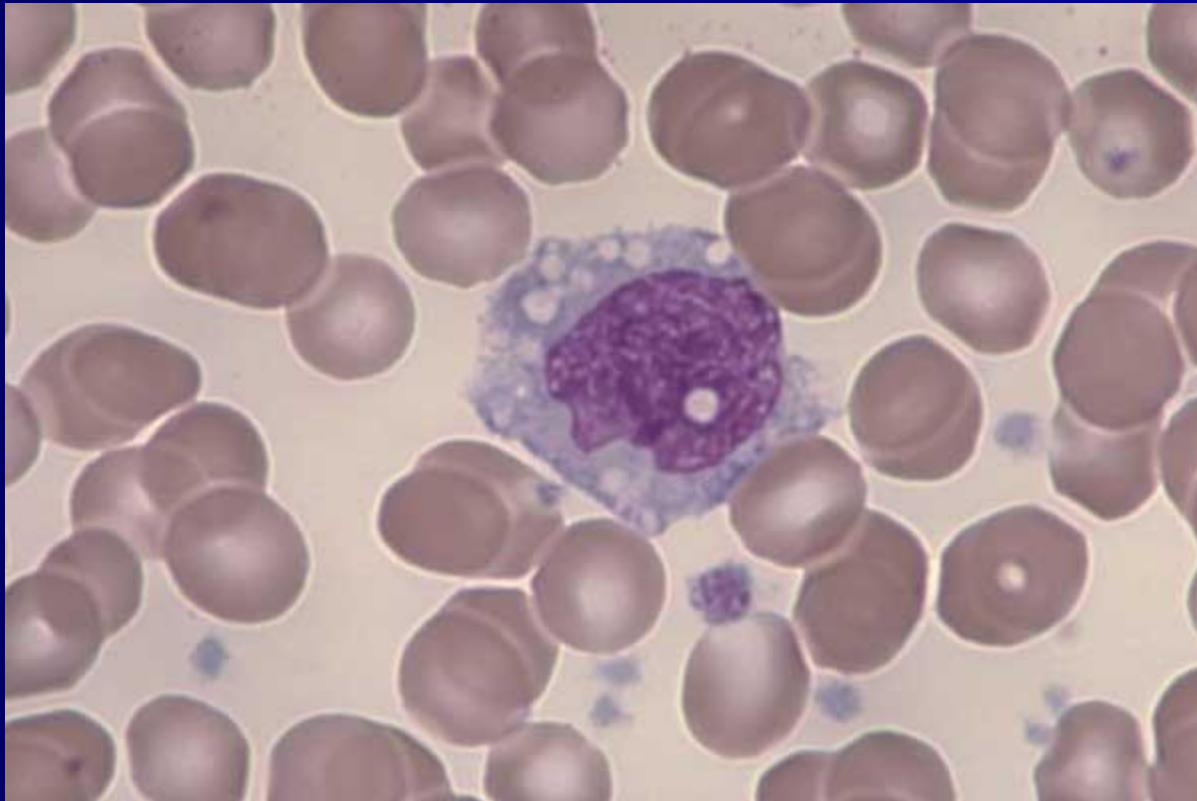
One Monocyte (left),
1 large Lymphocyte



One Segmented Neutrophil, 1 small Lymphocyte with spiculated cytoplasm, 1 Monocyte with extended cytoplasm



*One Monocyte with vacuoles, several
degranulated and swollen platelets*



One young Monocyte with immature chromatin and nucleoli

