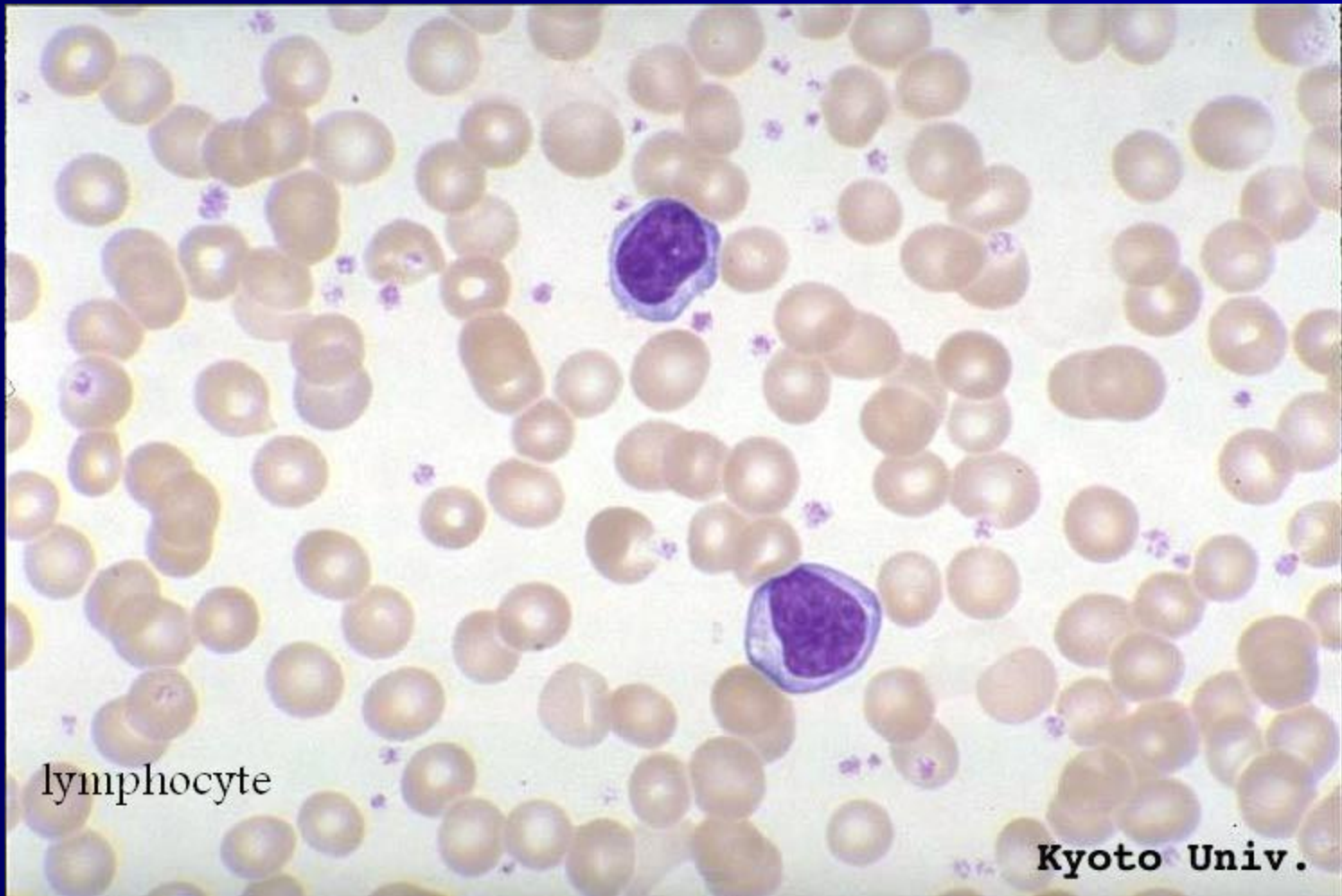


A scenic landscape featuring a calm lake in the foreground, surrounded by lush green grass and vibrant pink flowers. In the background, a dense forest of tall evergreen trees frames a view of snow-capped mountains under a clear blue sky. The water in the lake is dark and still, reflecting the surrounding greenery and the distant peaks.

Lymphocyte



# Lymphocyte

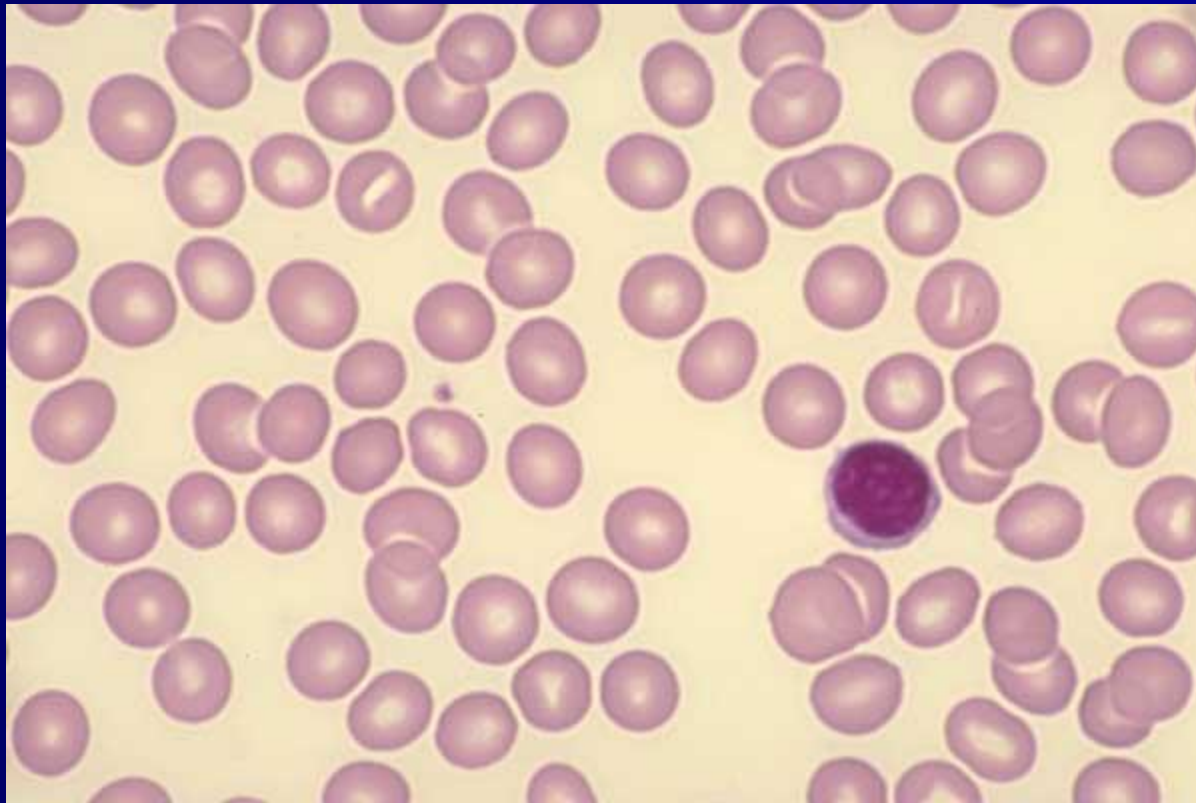


lymphocyte

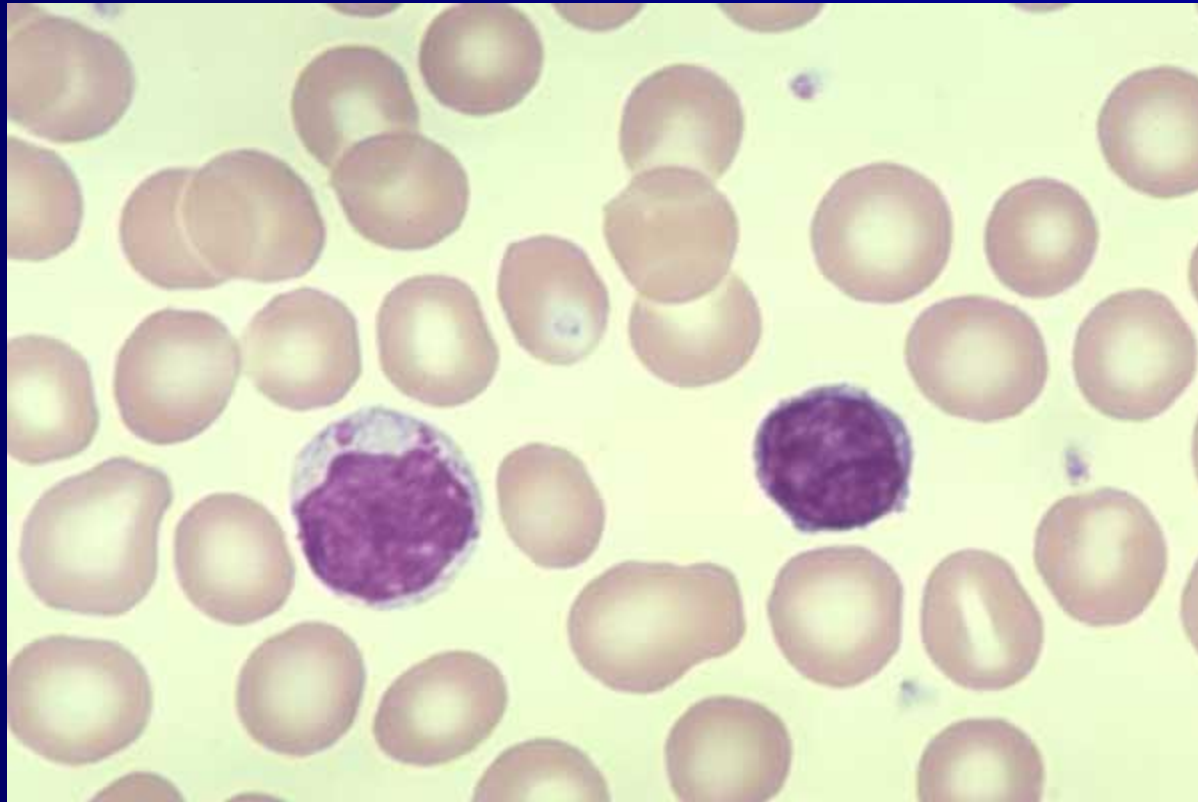
Kyoto Univ.

# LYMPHOCYTE

**Normal blood**



# TWO LYMPHOCYTES (1 WITH GRANULES)



*One very large  
Lymphocyte (LGL)*

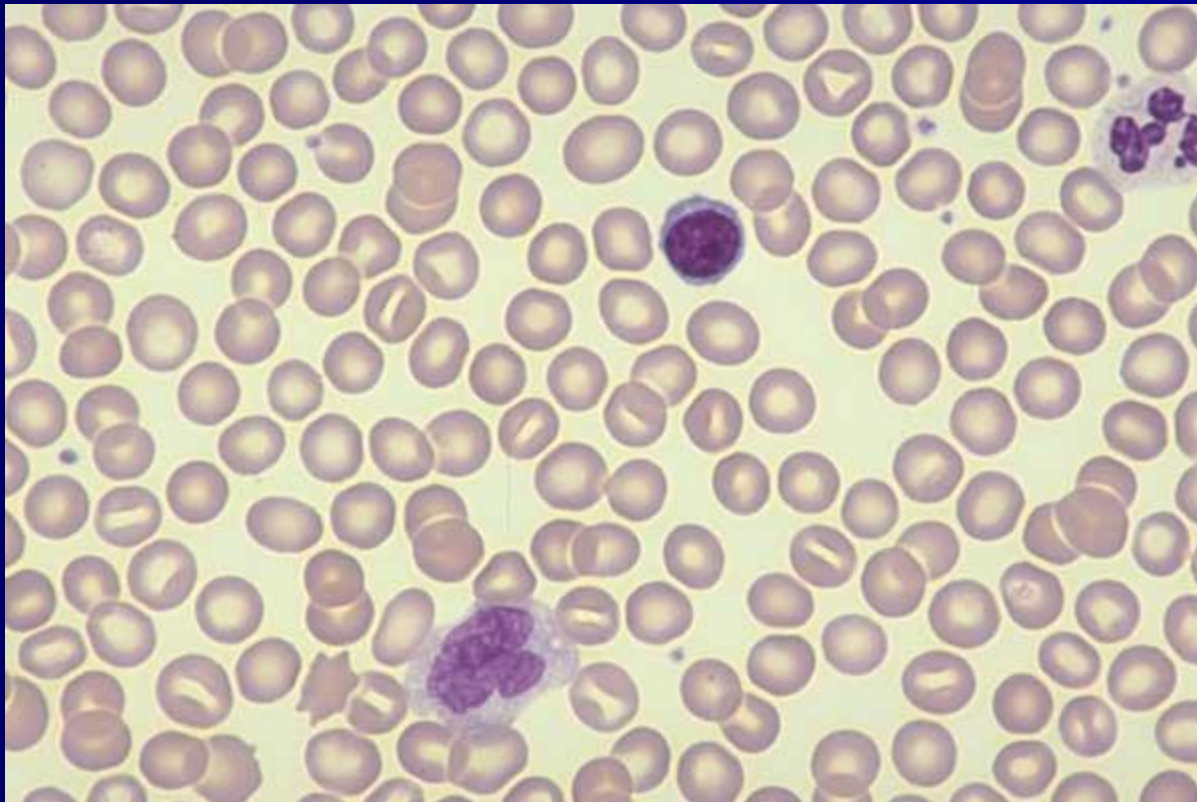


Two **Lymphocytes**; 1 with prominent granules, 1 with fine granules. Tail area of normal blood smear

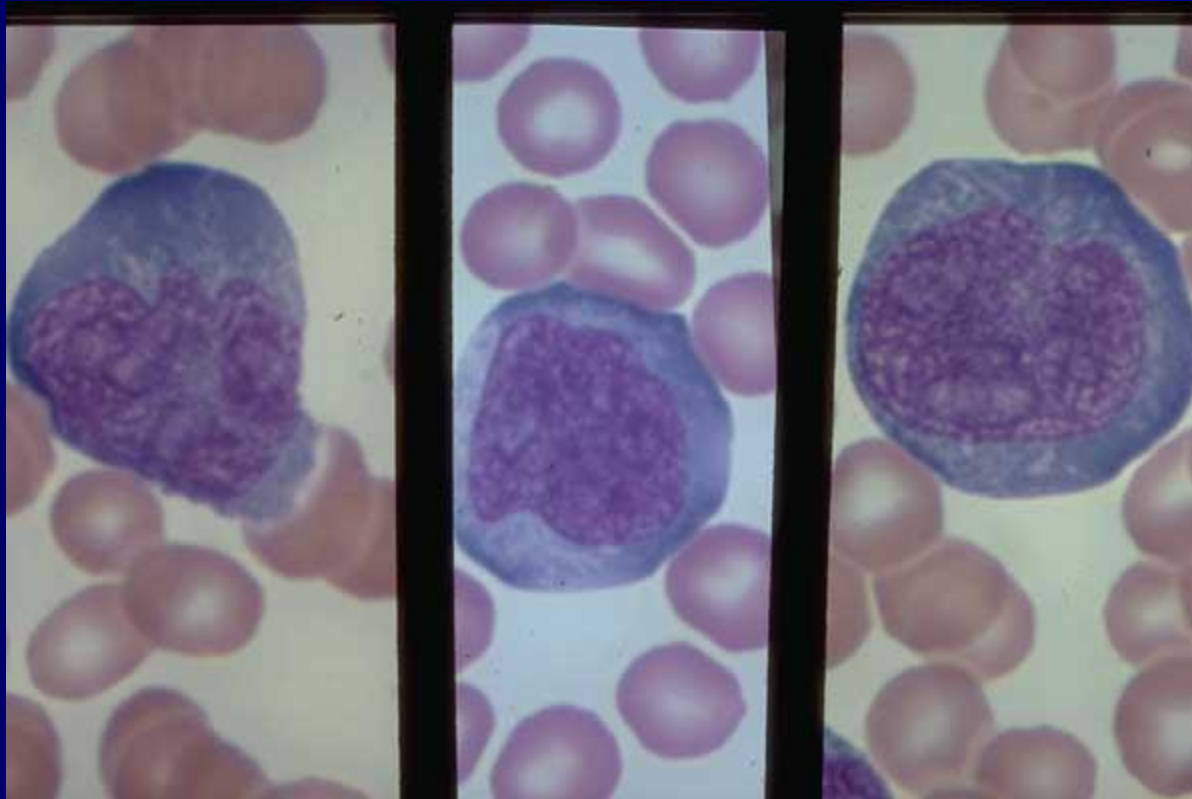




One lymphocyte, 1 Monocyte,  
1 Segmented Neutrophil

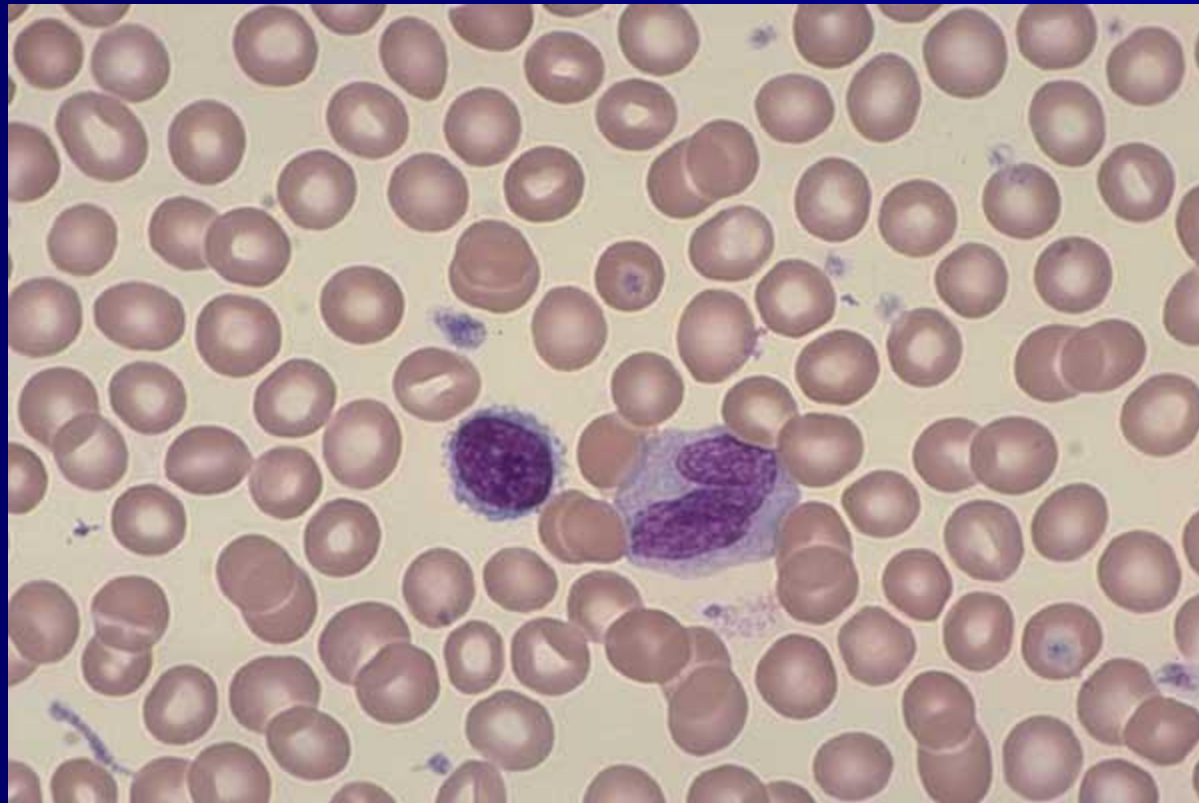


# *Plasmacytoid Lymphocytes, viral or bacterial infection*





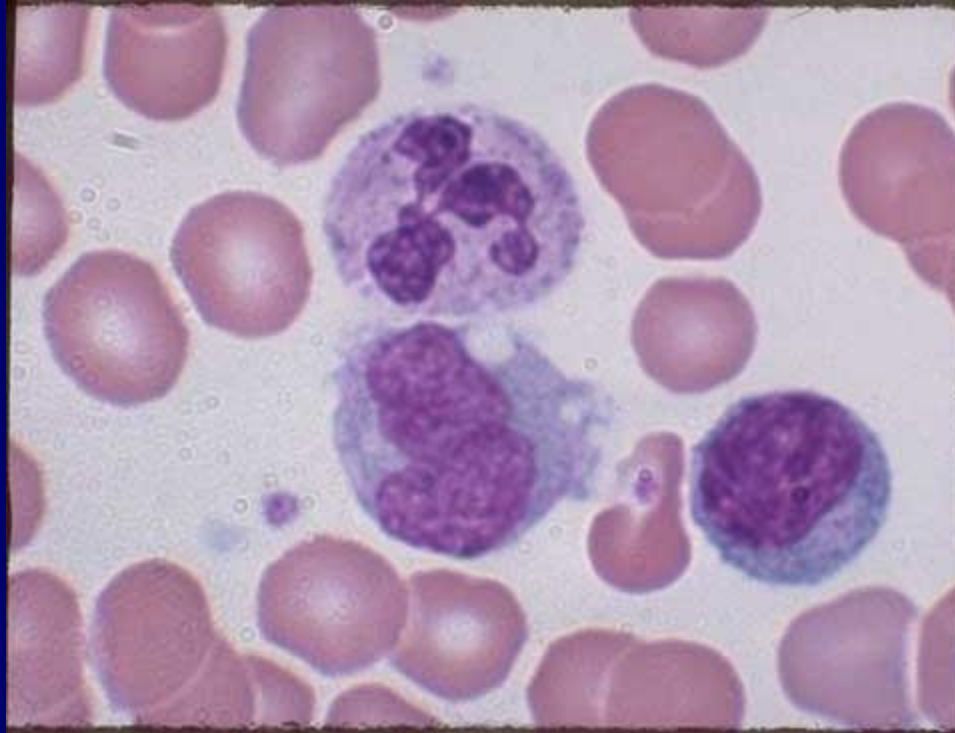
*Lymphocyte, 1 Monocyte (band shaped nucleus)*



**Three lymphocytes (1 large granular Lymphocyte in top right frame and 2 small Lymphocytes in lower frame), 1 monocyte in top left frame**

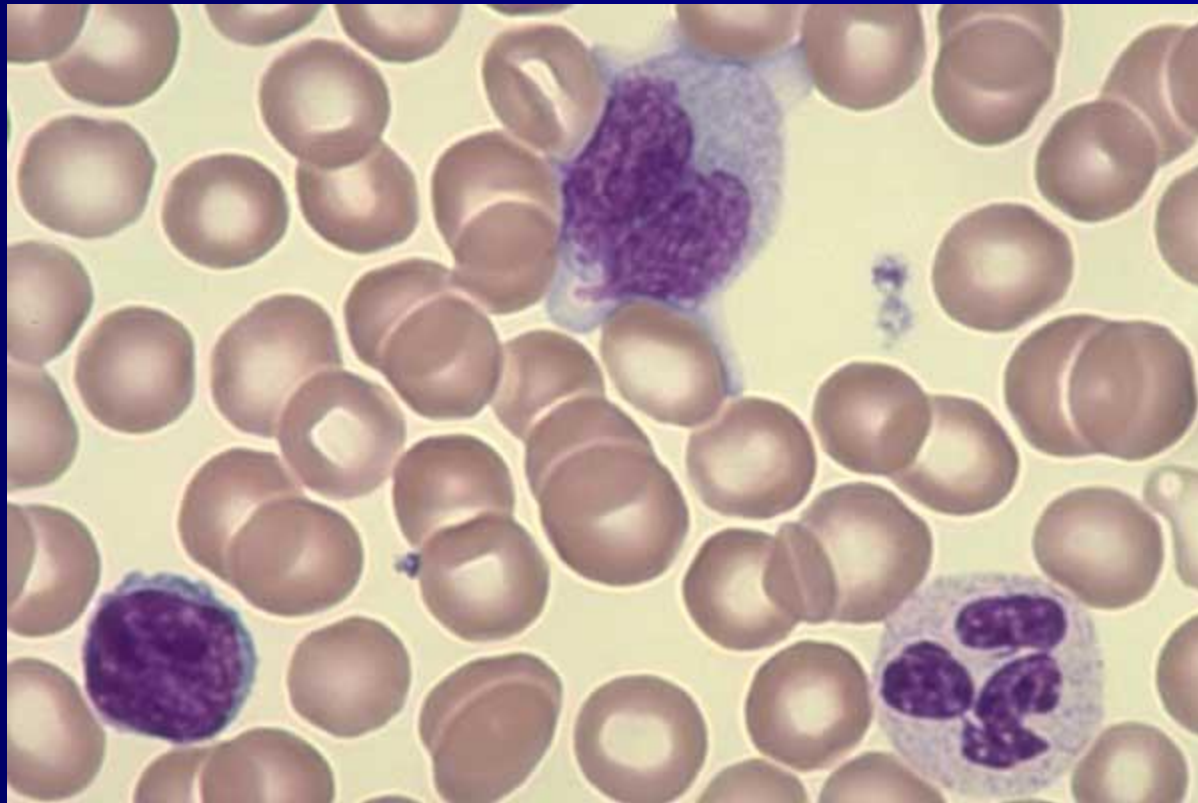


# One Monocyte, 1 Lymphocyte, 1 Segmented Neutrophil

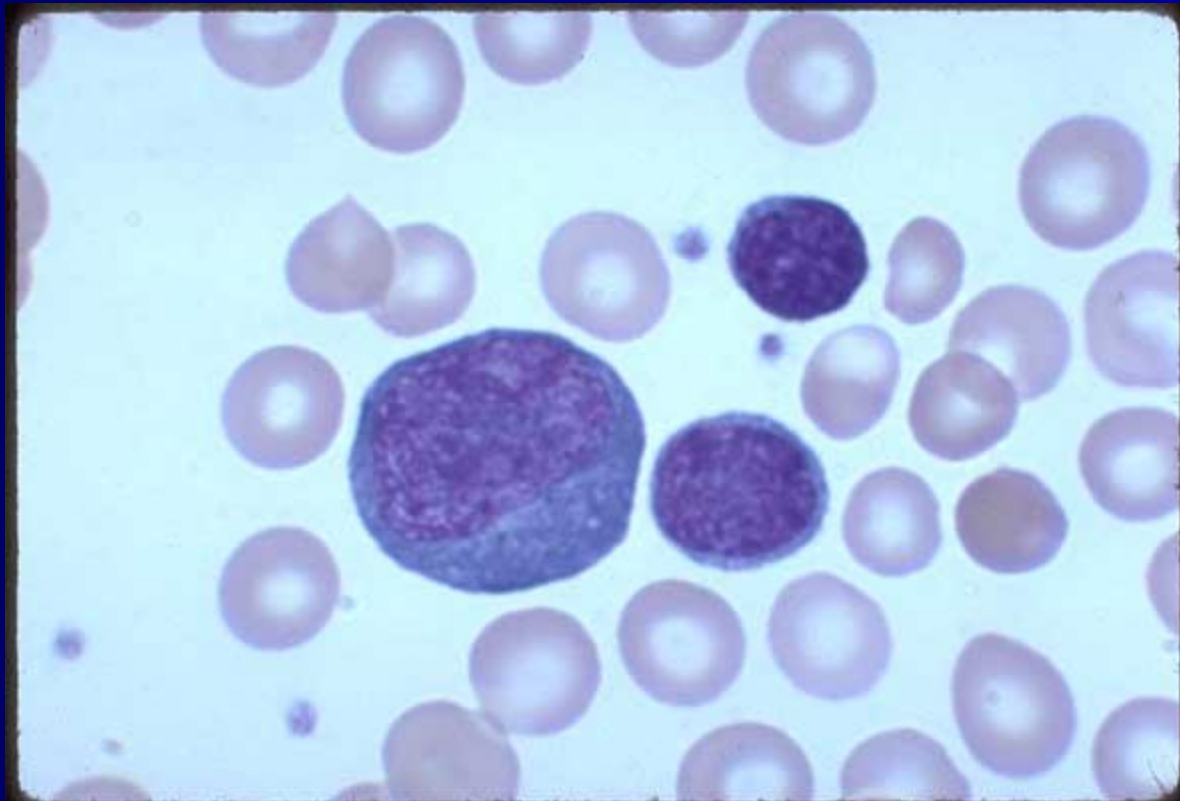




# One small Lymphocyte, 1 Monocyte, 1 segmented Neutrophil



*One Plasmacytoid Lymphocyte and 2 small  
Mature Lymphocytes*

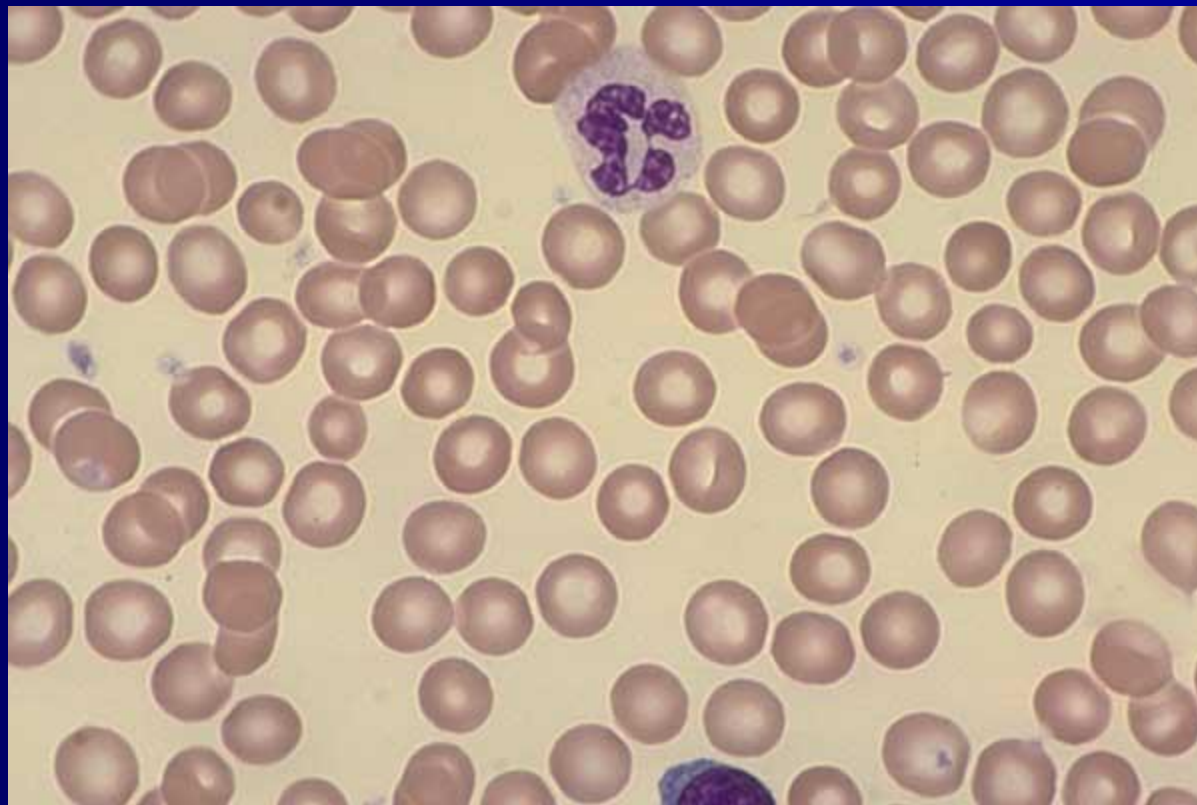


# Plasmacytoid Lymphocyte

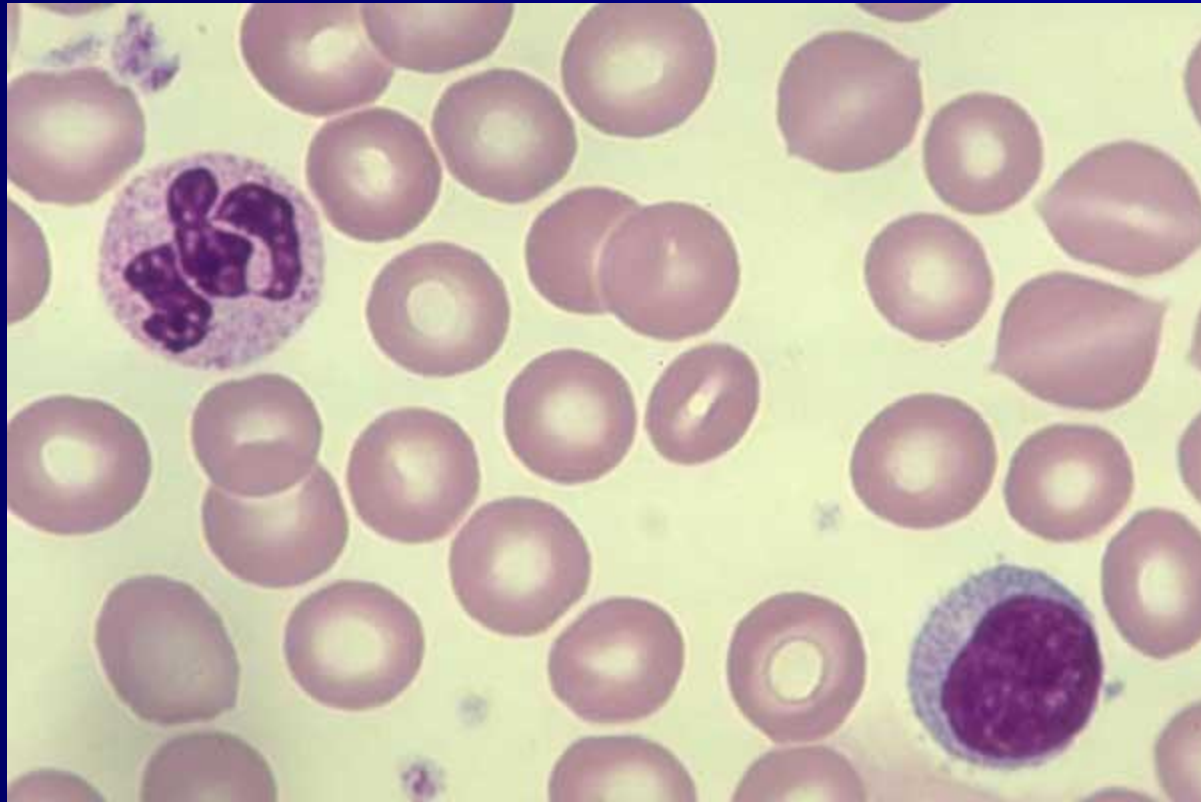




# Normal blood, Segmented Neutrophil, Small Lymphocyte

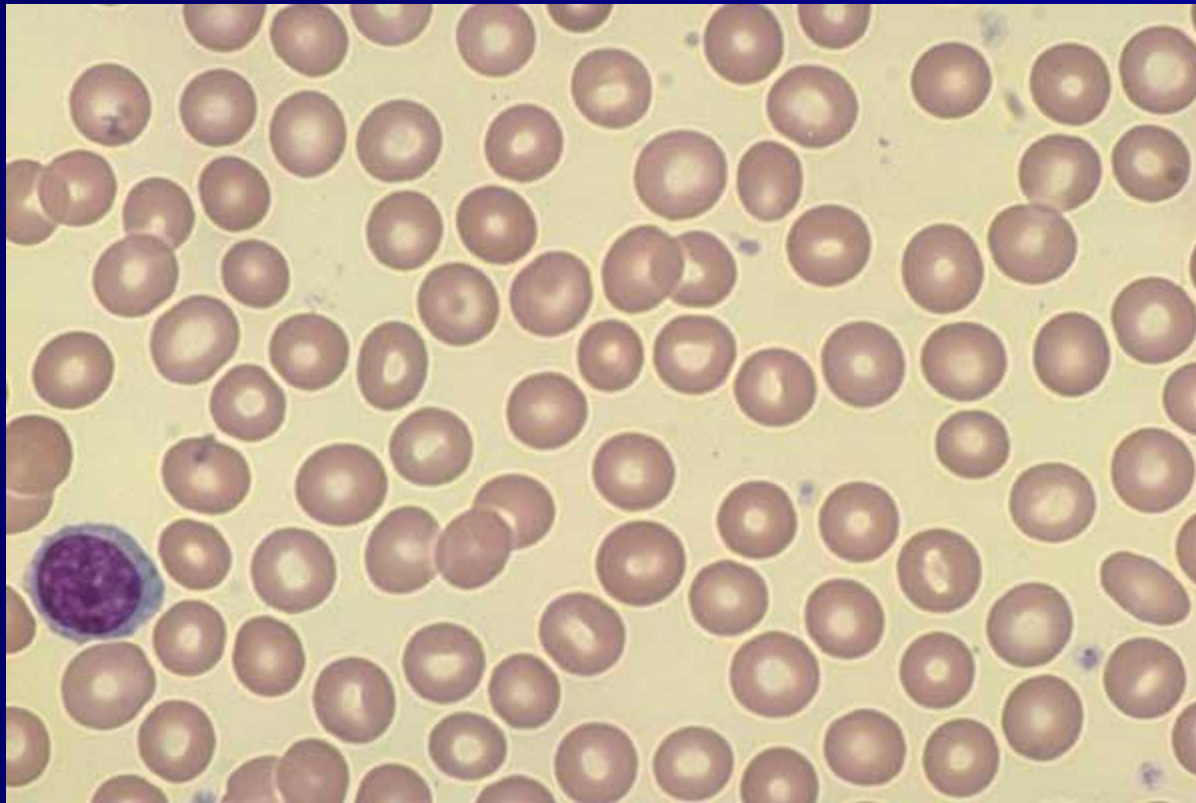


*Segmented Neutrophil, Lymphocyte,*  
*Normal blood*



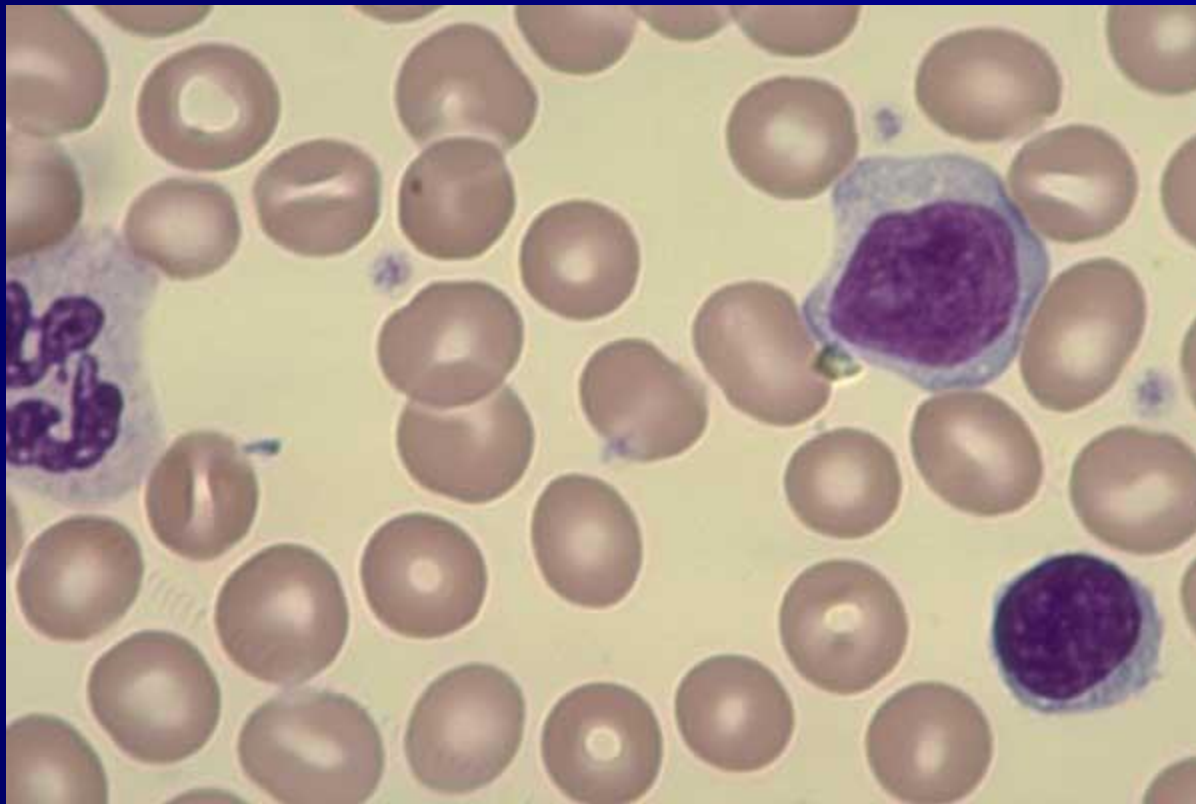
# *Lymphocyte*

Normal blood





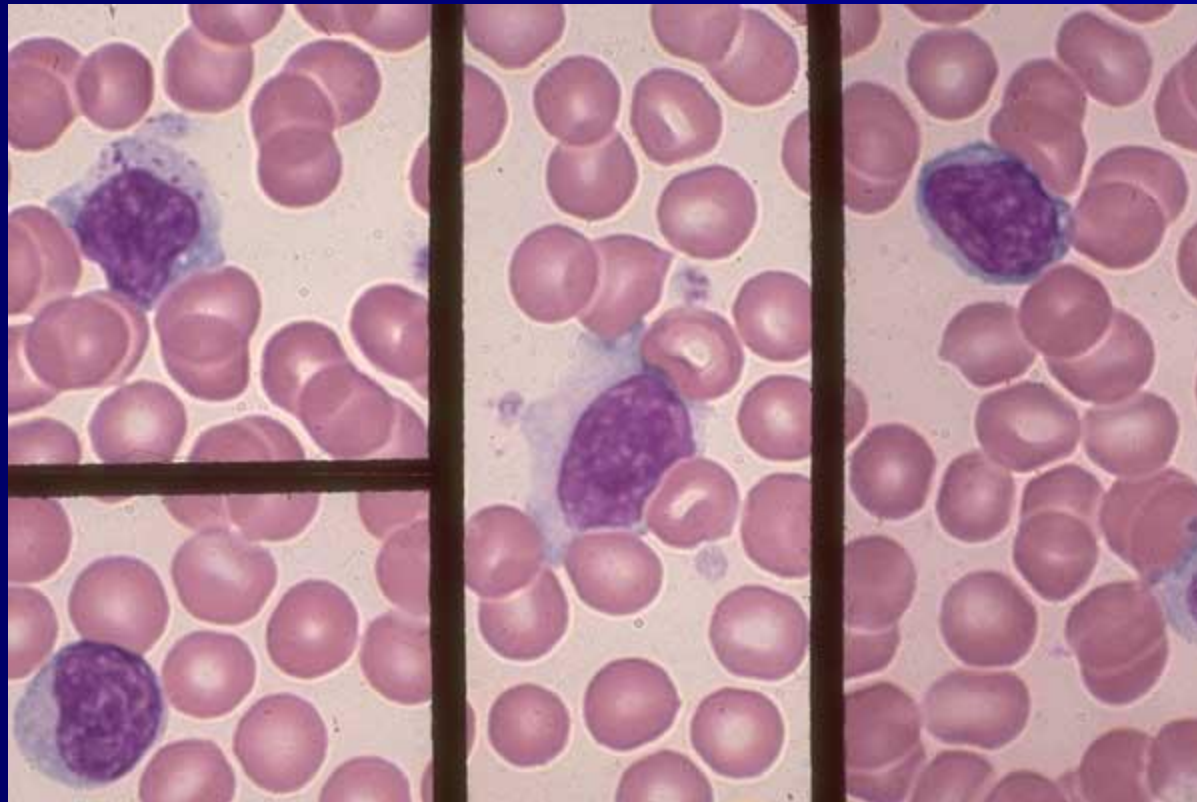
**One segmented Neutrophil, 1 large Lymphocyte, 1  
Small Lymphocyte**



*Lymphocyte*, thin tail area blood

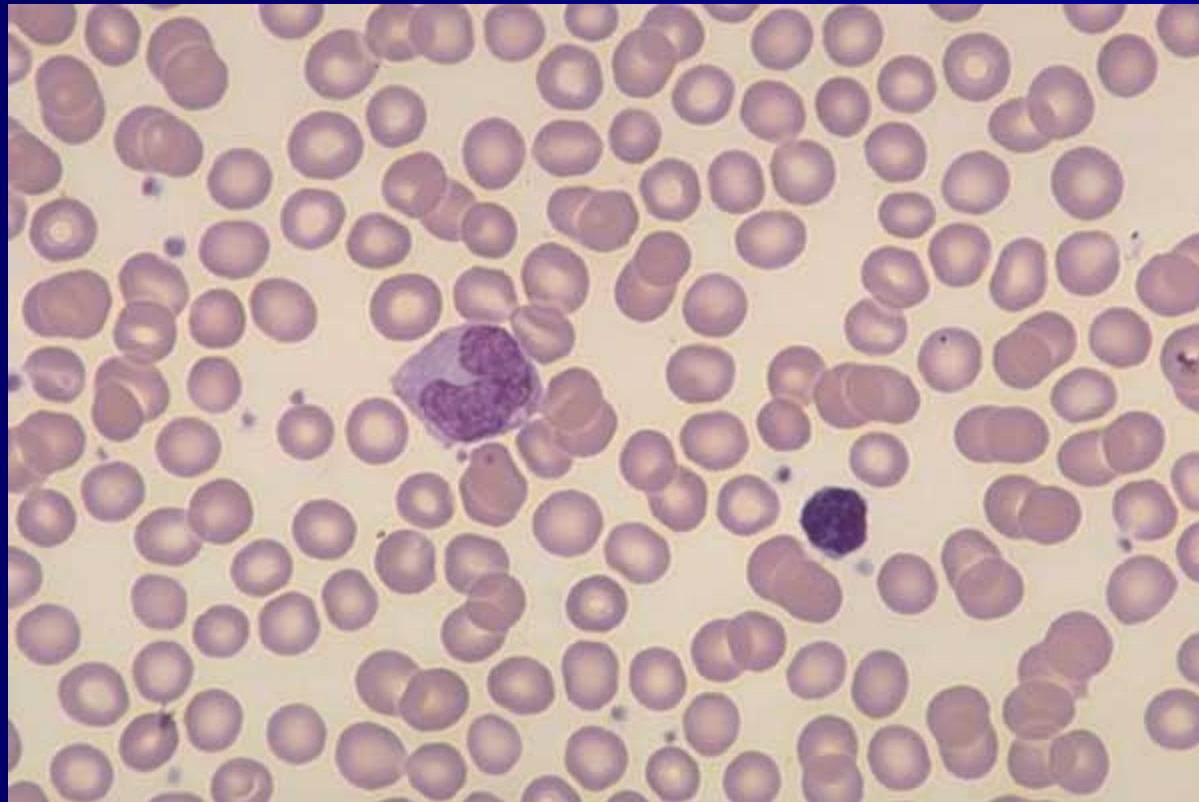


**Large Granular Lymphocyte (LGL) in top left frame, 1 large Lymphocyte in center frame, 3 medium Lymphocytes in lower left**

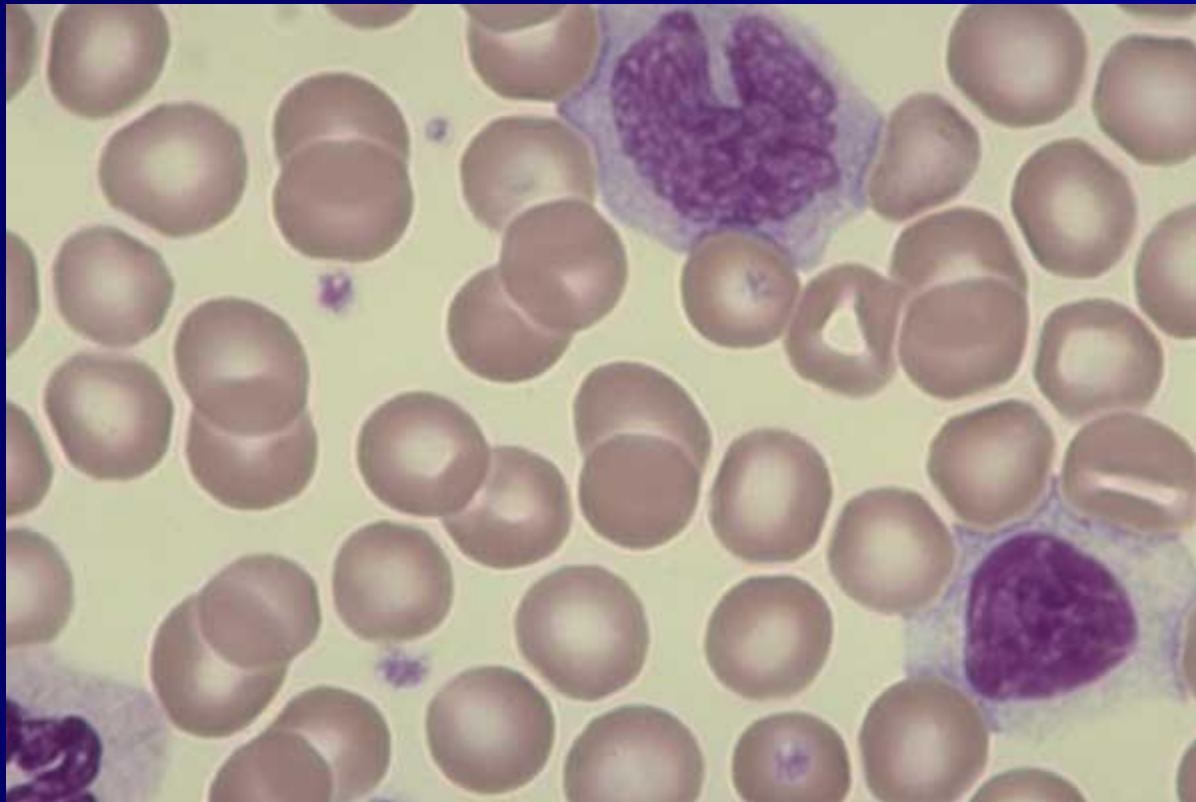




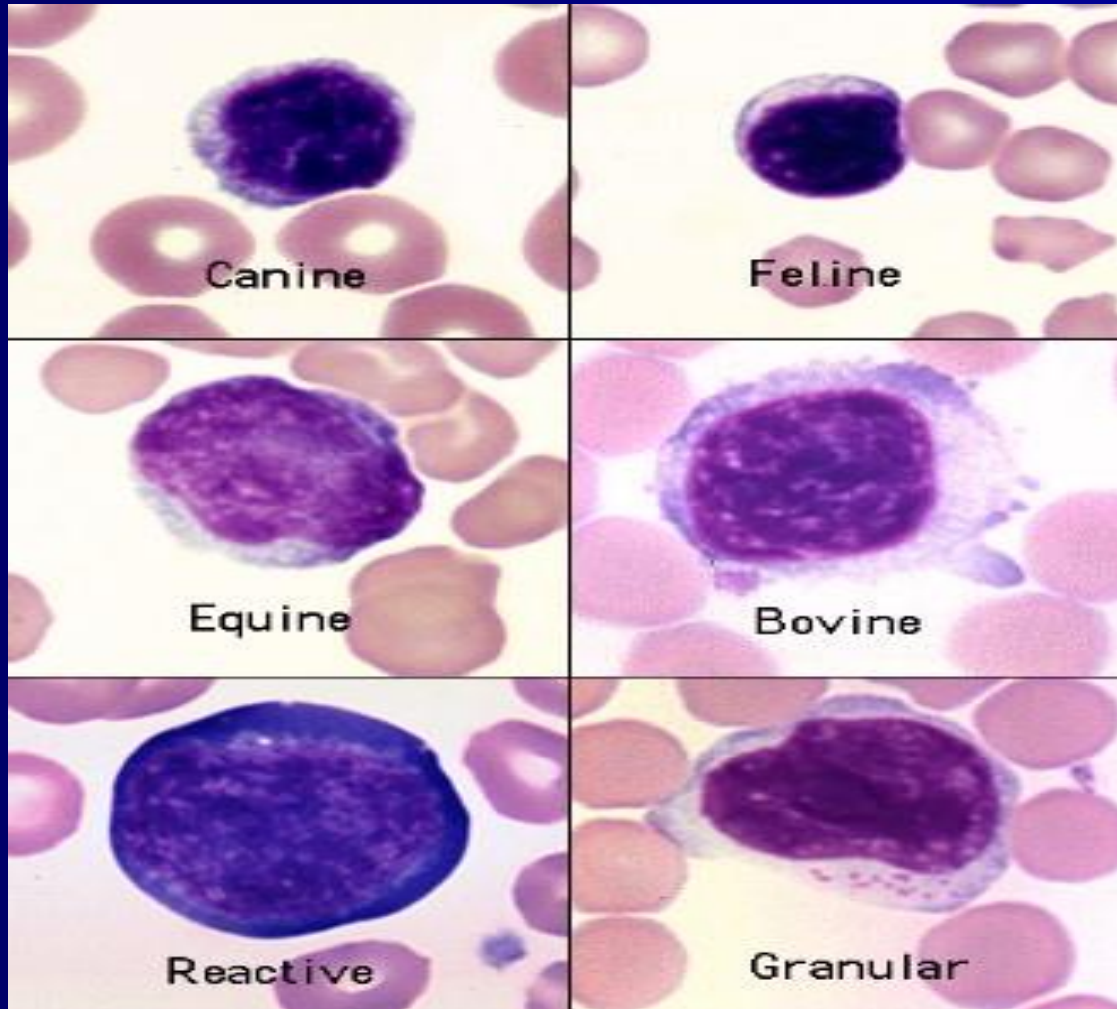
***One very small  
Lymphocyte, 1 Monocyte***



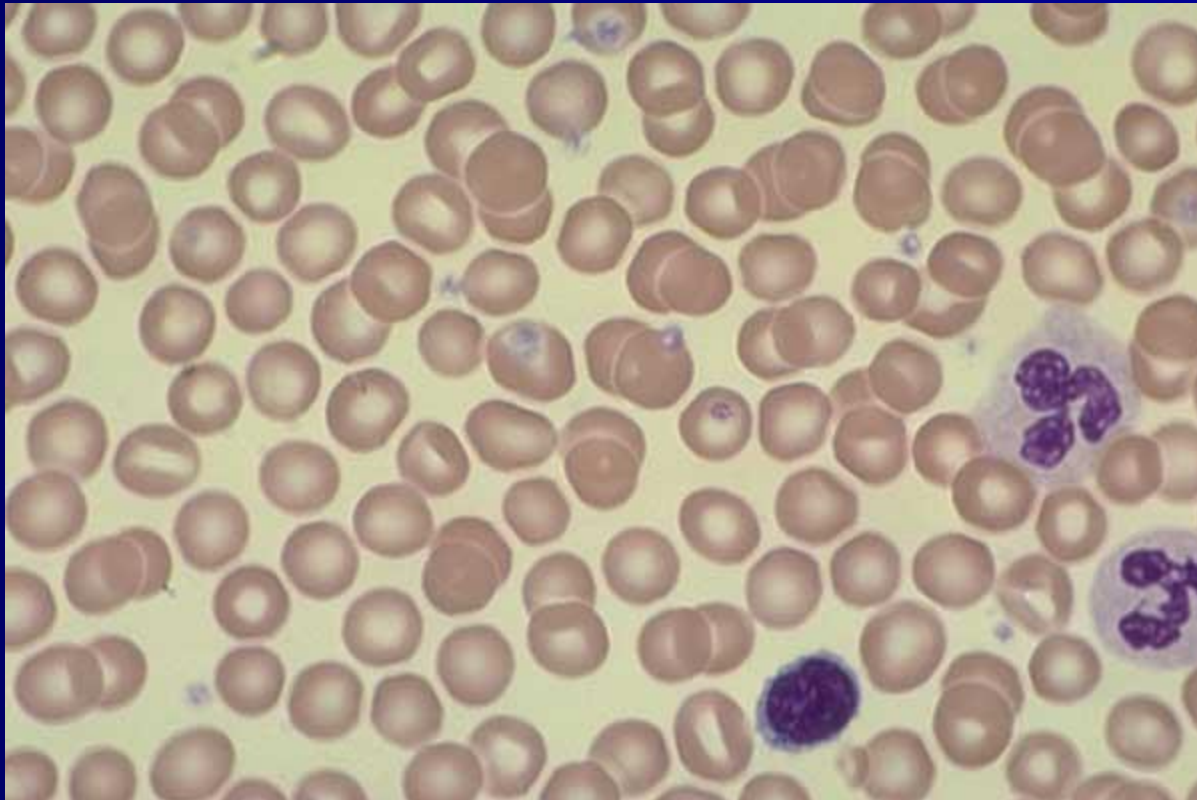
One monocyte, 1 Segmented **Neutrophil**,  
1 Large (reactive) **Lymphocyte** at lower right



# *Lymphcomp*



*Normal blood, Segmented  
Neutrophils, Lymphocyte*



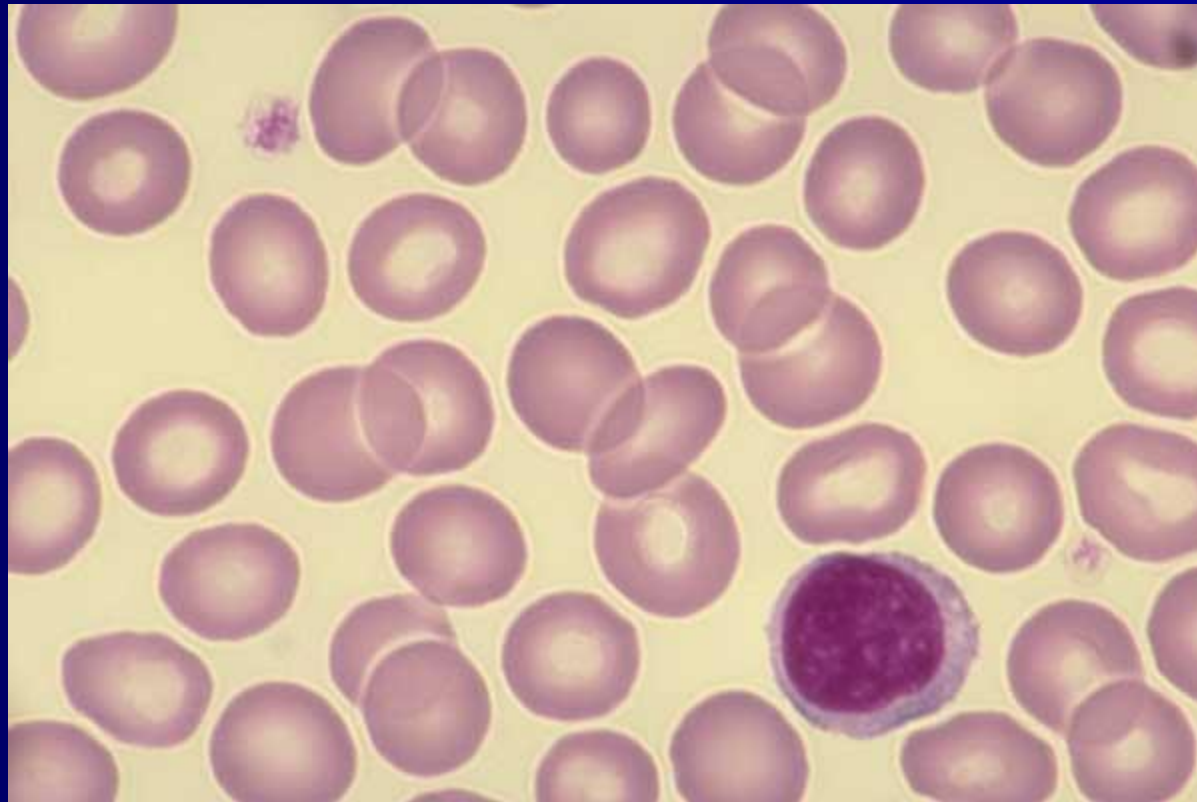


**One Segmented Neutrophil, 1  
Band Neutrophil,  
1 Lymphocyte.**

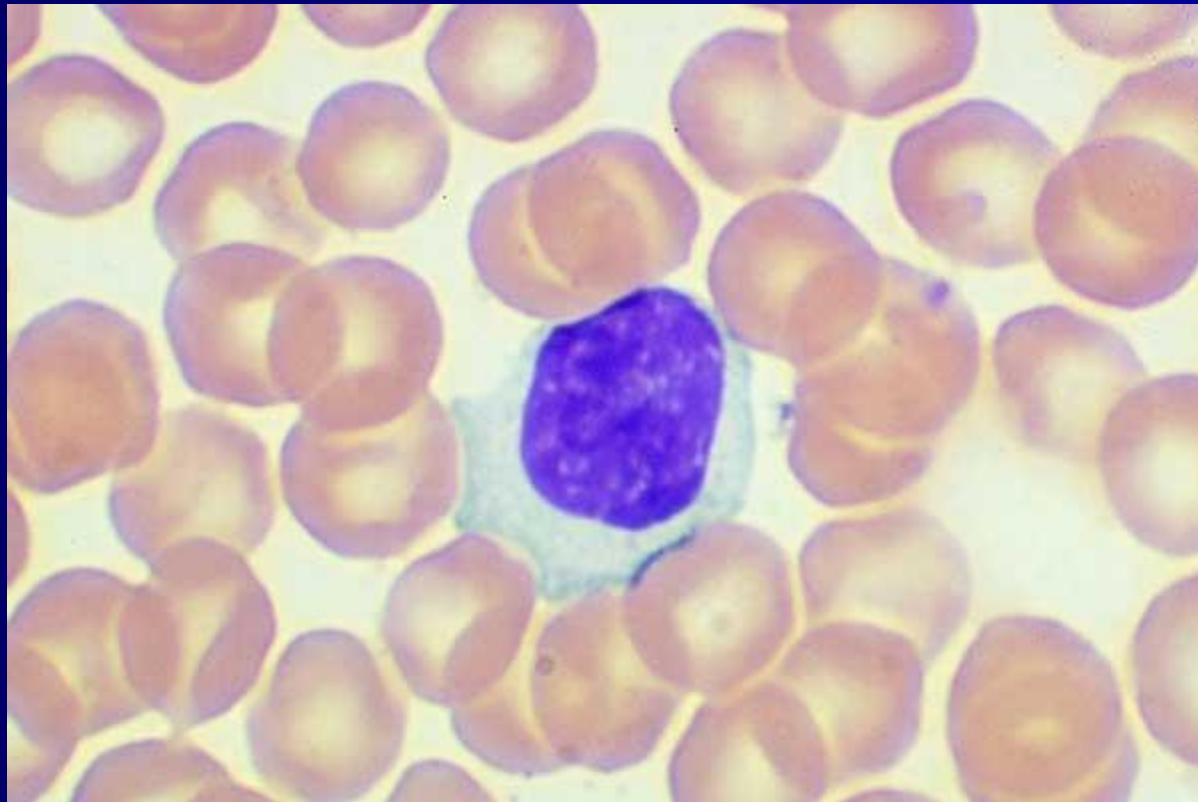


# Lymphocyte,

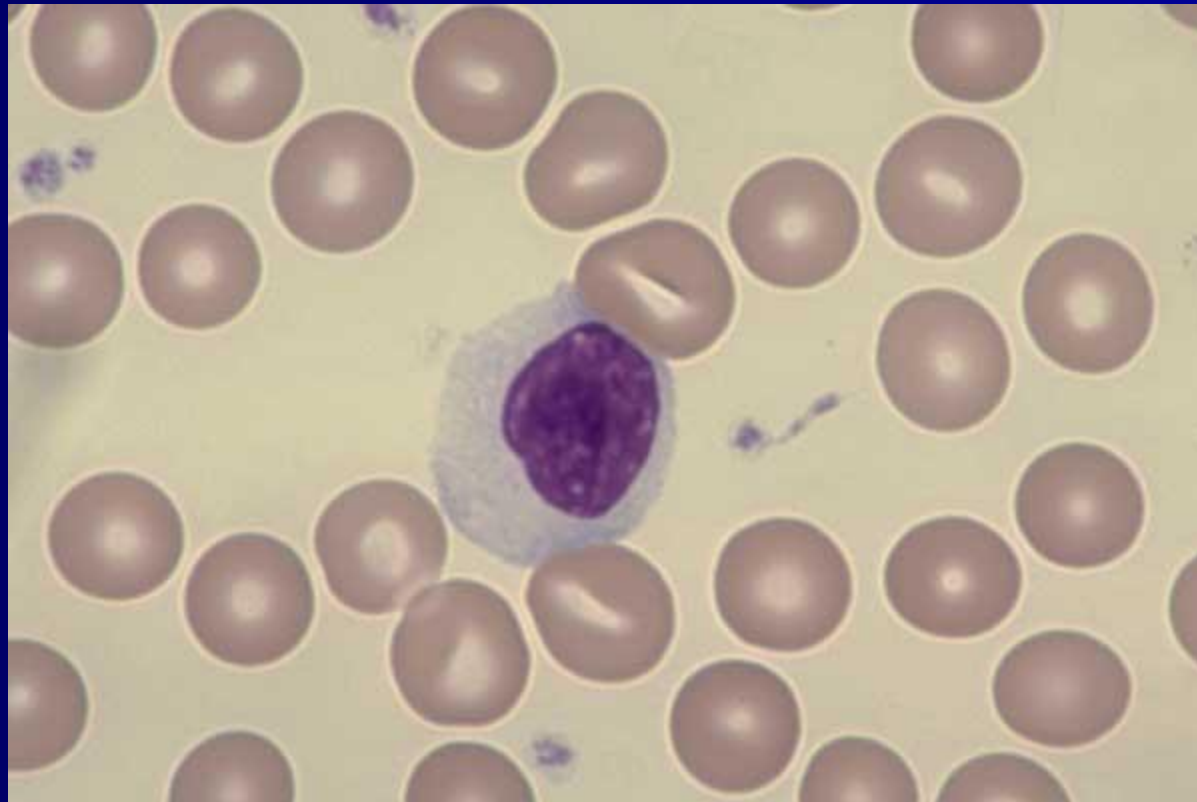
*Normal blood*



**One very Large**  
*Lymphocyte (Reactive)*



# One very Large Lymphocyte (reactive)

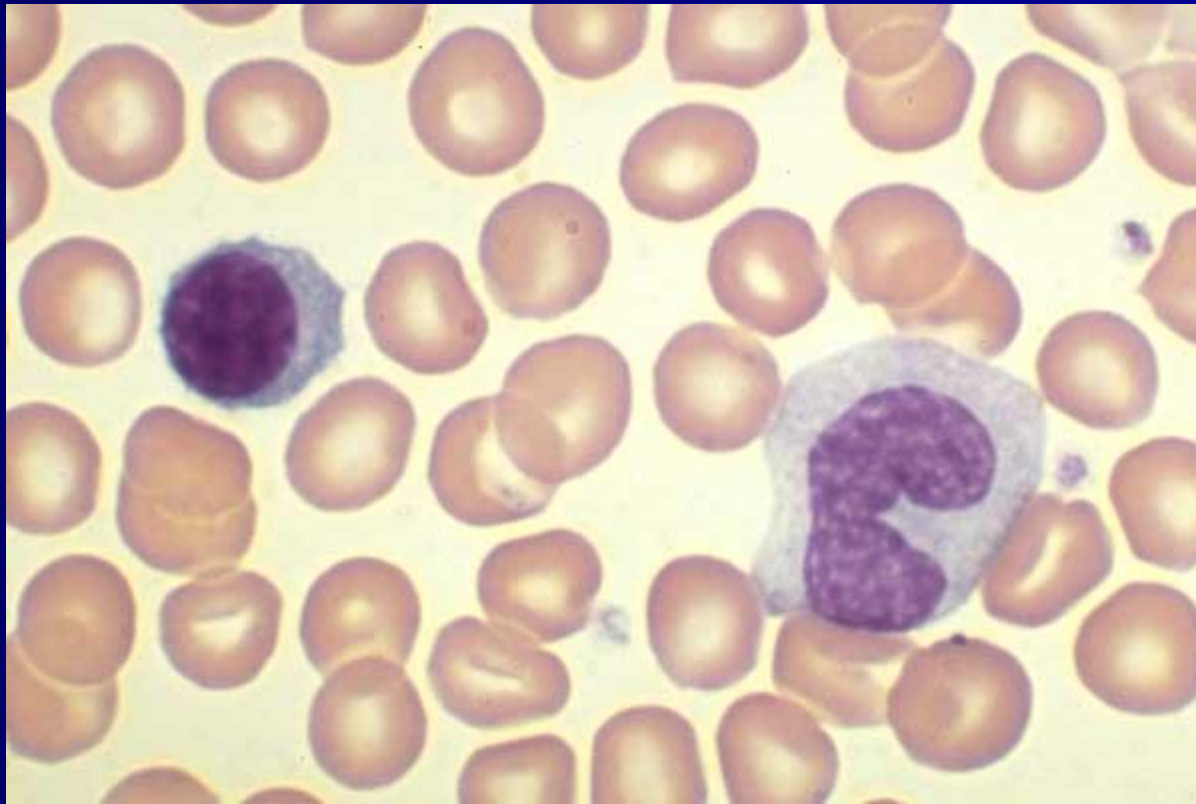




One Segmented Neutrophil, 1  
Monocyte, 2 Lymphocytes



**One Lymphocyte, 1 Monocyte  
(band shaped nucleus).**



# One Monocyte, 1 Large Lymphocyte (Plasmacytoid)



*One Monocyte (left),  
1 Large Lymphocyte*





**One Segmented Neutrophil, 1 small Lymphocyte with spiculated cytoplasm, 1 Monocyte with extended cytoplasm**

